



[Go to Product page](#)

Datasheet for ABIN1315774

POU1F1 Protein (AA 1-291) (GST tag)

1 Image

Overview

Quantity:	10 µg
Target:	POU1F1
Protein Characteristics:	AA 1-291
Origin:	Human
Source:	Wheat germ
Protein Type:	Recombinant
Purification tag / Conjugate:	This POU1F1 protein is labelled with GST tag.
Application:	ELISA, Western Blotting (WB), Affinity Purification (AP), Antibody Array (AA)

Product Details

Purpose:	POU1F1 (Human) Recombinant Protein (P01)
Sequence:	MSCQAFTSAD TFIPLNSDAS ATLPLIMHHS AAELPVSNH ATNVMSTATG LHYSVPSCHY GNQPSTYGVM AGSLTPCLYK FPDHTLSHGF PPIHQPLLA E DPTAADFKQE LRRKSKLVEE PIDMDSPEIR ELEKFANEFK VRRIKLGYTQ TNVGEALAAV HGSEFSQTTI CRFENLQLSF KNACKLKAIL SKWLEEAQV GALYNEKVGA NERKRKRRTT ISIAAKDALE RHFGEQNKPS SQEIMRMAEE LNLEKEVVRV WFCNRRQREK RVKTSLNQSL FSISKEHLEC R
Characteristics:	Human POU1F1 full-length ORF (NP_000297.1, 1 a.a. - 291 a.a.) recombinant protein with GST-tag at N-terminal.
Purification:	in vitro wheat germ expression system

Target Details

Target:	POU1F1
Alternative Name:	POU1F1 (POU1F1 Products)
Background:	Full Gene Name: POU class 1 homeobox 1 Synonyms: GHF-1,PIT1,Pit-1
Gene ID:	5449
NCBI Accession:	NM_000306
Pathways:	Regulation of Carbohydrate Metabolic Process

Application Details

Application Notes:	Optimal working dilution should be determined by the investigator.
Comment:	Preparation method: in vitro, wheat germ expression system Product Quality tested by: 12.5% SDS-PAGE Stained with Coomassie Blue.
Restrictions:	For Research Use only

Handling

Buffer:	50 mM Tris-HCl, 10 mM reduced Glutathione, pH =8.0 in the elution buffer.
Handling Advice:	Aliquot to avoid repeated freezing and thawing.
Storage:	-80 °C
Storage Comment:	Best use within three months from the date of receipt of this protein.

Images

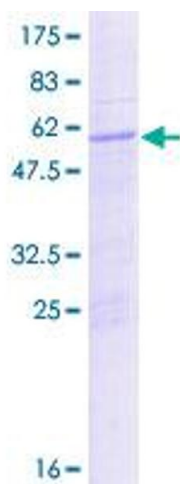


Image 1.