



[Go to Product page](#)

Datasheet for ABIN1315794

## POU4F1 Protein (AA 1-419) (GST tag)

### 1 Image

#### Overview

Quantity:	25 µg
Target:	POU4F1
Protein Characteristics:	AA 1-419
Origin:	Human
Source:	Wheat germ
Protein Type:	Recombinant
Purification tag / Conjugate:	This POU4F1 protein is labelled with GST tag.
Application:	ELISA, Western Blotting (WB), Affinity Purification (AP), Antibody Array (AA)

#### Product Details

Purpose:	POU4F1 (Human) Recombinant Protein (P01)
Sequence:	MMSMNSKQPH FAMHPTLPEH KYPSLHSSSE AIRRACLPTP PLQSNLFASL DETLLARAEA LAAVDIAVSQ GKSHPFKPDA TYHTMNSVPC TSTSTVPLAH HHHHHHHHQA LEPGDLLDHI SSPSLALMAG AGGAGAAAGG GGAHDGPGGG GPGGGGGGPG GPGGGGGGGG PGGGGGGP GLLGSAHPH PHMHLGHLS HPAAAAAMNM PSGLPHPGLV AAAAHHGAAA AAAAAAGQV AAASAAAVV GAAGLASICD SDTDPRELEA FAERFKQRR I KLGVTQADVG SALANLKIPG VGSLSQSTIC RFESLTLSHN NMIALKPILQ AWLEEAEGAQ REKMNKPELF NGGEKKRKRT SIAAPEKRSL EAYFAVQPRP SSEKIAAIAE KLDLKKNVVR VWFCNQRQKQ KRMKFSATY
Characteristics:	Human POU4F1 full-length ORF ( AAI48793.1, 1 a.a. - 419 a.a.) recombinant protein with GST-tag at N-terminal.
Purification:	in vitro wheat germ expression system

## Target Details

Target:	POU4F1
Alternative Name:	POU4F1 ( <a href="#">POU4F1 Products</a> )
Background:	Full Gene Name: POU class 4 homeobox 1 Synonyms: BRN3A,FLJ13449,Oct-T1,RDC-1
Gene ID:	5457
Pathways:	<a href="#">Feeding Behaviour</a>

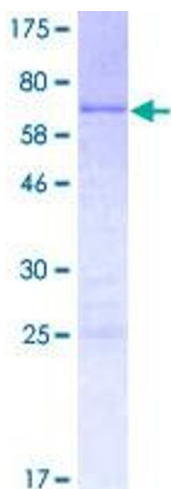
## Application Details

Application Notes:	Optimal working dilution should be determined by the investigator.
Comment:	Preparation method: in vitro, wheat germ expression system Product Quality tested by: 12.5% SDS-PAGE Stained with Coomassie Blue.
Restrictions:	For Research Use only

## Handling

Buffer:	50 mM Tris-HCl, 10 mM reduced Glutathione, pH =8.0 in the elution buffer.
Handling Advice:	Aliquot to avoid repeated freezing and thawing.
Storage:	-80 °C
Storage Comment:	Best use within three months from the date of receipt of this protein.

## Images



**Image 1.**