



[Go to Product page](#)

Datasheet for ABIN1315847

CXCL7 Protein (AA 37-128) (GST tag)

1 Image

Overview

Quantity:	10 µg
Target:	CXCL7 (PPBP)
Protein Characteristics:	AA 37-128
Origin:	Human
Source:	Wheat germ
Protein Type:	Recombinant
Purification tag / Conjugate:	This CXCL7 protein is labelled with GST tag.
Application:	Western Blotting (WB), ELISA, Affinity Purification (AP), Antibody Array (AA)

Product Details

Purpose:	PPBP (Human) Recombinant Protein (Q01)
Sequence:	TKGQTKRNLA KGKEESLSD LYAELRCMCI KTTSGIHPKN IQSLEVIGKG THCNQVEVIA TLKDGRKICL DPDAPRIKKI VQKKLAGEDES AD
Characteristics:	Human PPBP partial ORF (AAH28217, 37 a.a. - 128 a.a.) recombinant protein with GST-tag at N-terminal.
Purification:	in vitro wheat germ expression system

Target Details

Target:	CXCL7 (PPBP)
Alternative Name:	PPBP (PPBP Products)

Target Details

Background: Full Gene Name: pro-platelet basic protein (chemokine (C-X-C motif) ligand 7)
Synonyms: B-TG1,Beta-TG,CTAP-III,CTAP3,CTAPIII,CXCL7,LA-PF4,LDGF,MDGF,NAP-2,PBP,SCYB7,TC1,TC2,TGB,TGB1,THBGB,THBGB1

Gene ID: 5473

Application Details

Application Notes: Optimal working dilution should be determined by the investigator.

Comment: Preparation method: in vitro, wheat germ expression system
Product Quality tested by: 12.5% SDS-PAGE Stained with Coomassie Blue.

Restrictions: For Research Use only

Handling

Buffer: 50 mM Tris-HCl, 10 mM reduced Glutathione, pH =8.0 in the elution buffer.

Handling Advice: Aliquot to avoid repeated freezing and thawing.

Storage: -80 °C

Storage Comment: Best use within three months from the date of receipt of this protein.

Images

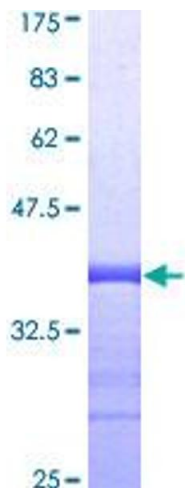


Image 1.