



[Go to Product page](#)

Datasheet for ABIN1315854

LIPA3 Protein (AA 1043-1139) (GST tag)

1 Image

Overview

Quantity:	10 µg
Target:	LIPA3 (PPFIA3)
Protein Characteristics:	AA 1043-1139
Origin:	Human
Source:	Wheat germ
Protein Type:	Recombinant
Purification tag / Conjugate:	This LIPA3 protein is labelled with GST tag.
Application:	ELISA, Western Blotting (WB), Affinity Purification (AP), Antibody Array (AA)

Product Details

Purpose:	PPFIA3 (Human) Recombinant Protein (Q01)
Sequence:	NERVMGWVSG LGLKEFATNL TESGVHGALL ALDETFDYSD LALLLQIPTQ NAQARQLLEK EFSNLISLGT DRRLEDESAK SFSRSPSWRK MFREKDL
Characteristics:	Human PPFIA3 partial ORF (NP_003651, 1043 a.a. - 1139 a.a.) recombinant protein with GST-tag at N-terminal.
Purification:	in vitro wheat germ expression system

Target Details

Target:	LIPA3 (PPFIA3)
Alternative Name:	PPFIA3 (PPFIA3 Products)

Target Details

Background:	Full Gene Name: protein tyrosine phosphatase, receptor type, f polypeptide (PTPRF), interacting protein (liprin), alpha 3 Synonyms: KIAA0654,LPNA3,MGC126567,MGC126569
Gene ID:	8541
NCBI Accession:	NM_003660

Application Details

Application Notes:	Optimal working dilution should be determined by the investigator.
Comment:	Preparation method: in vitro, wheat germ expression system Product Quality tested by: 12.5% SDS-PAGE Stained with Coomassie Blue.
Restrictions:	For Research Use only

Handling

Buffer:	50 mM Tris-HCl, 10 mM reduced Glutathione, pH =8.0 in the elution buffer.
Handling Advice:	Aliquot to avoid repeated freezing and thawing.
Storage:	-80 °C
Storage Comment:	Best use within three months from the date of receipt of this protein.

Images

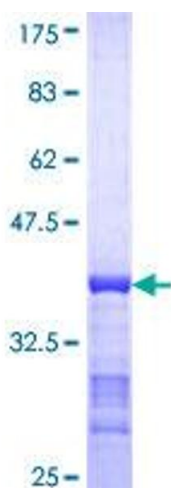


Image 1.