



[Go to Product page](#)

Datasheet for ABIN1315886

## PPIH Protein (AA 1-177) (GST tag)

### 1 Image

#### Overview

Quantity:	10 µg
Target:	PPIH
Protein Characteristics:	AA 1-177
Origin:	Human
Source:	Wheat germ
Protein Type:	Recombinant
Purification tag / Conjugate:	This PPIH protein is labelled with GST tag.
Application:	ELISA, Western Blotting (WB), Affinity Purification (AP), Antibody Array (AA)

#### Product Details

Purpose:	PPIH (Human) Recombinant Protein (P01)
Sequence:	MAVANSSPVN PVVFFDVSIG GQEVGRMKIE LFADVVPKTA ENFRQFCTGE FRKDGVPICY KGSTFHRVIK DFMIQGGDFV NGDGTGVASI YRGPFADENF KLRHSAPGLL SMANSGPSTN GCQFFITCSK CDWLDGKHVV FGKIIDGLLV MRKIENVPTG PNNKPKLPVV ISQCGEM
Characteristics:	Human PPIH full-length ORF ( AAH03412, 1 a.a. - 177 a.a.) recombinant protein with GST-tag at N-terminal.
Purification:	in vitro wheat germ expression system

#### Target Details

Target:	PPIH
Alternative Name:	PPIH ( <a href="#">PPIH Products</a> )

## Target Details

Background:	Full Gene Name: peptidylprolyl isomerase H (cyclophilin H) Synonyms: CYP-20,CYPH,MGC5016,SnuCyp-20,USA-CYP
Gene ID:	10465

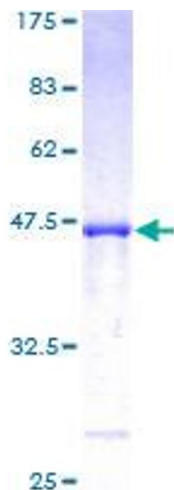
## Application Details

Application Notes:	Optimal working dilution should be determined by the investigator.
Comment:	Preparation method: in vitro, wheat germ expression system Product Quality tested by: 12.5% SDS-PAGE Stained with Coomassie Blue.
Restrictions:	For Research Use only

## Handling

Buffer:	50 mM Tris-HCl, 10 mM reduced Glutathione, pH =8.0 in the elution buffer.
Handling Advice:	Aliquot to avoid repeated freezing and thawing.
Storage:	-80 °C
Storage Comment:	Best use within three months from the date of receipt of this protein.

## Images



**Image 1.**