



[Go to Product page](#)

Datasheet for ABIN1315912

## PPM1F Protein (AA 1-454) (GST tag)

### 1 Image

#### Overview

Quantity:	10 µg
Target:	PPM1F
Protein Characteristics:	AA 1-454
Origin:	Human
Source:	Wheat germ
Protein Type:	Recombinant
Purification tag / Conjugate:	This PPM1F protein is labelled with GST tag.
Application:	ELISA, Western Blotting (WB), Affinity Purification (AP), Antibody Array (AA)

#### Product Details

Purpose:	PPM1F (Human) Recombinant Protein (P01)
Sequence:	MSSGAPQKSS PMASGAEETP GFLDTLLQDF PALLNPEDPL PWKAPGTVLS QEEVEGELAE LAMGFLGSRK APPPLAAALA HEAVSPLLQT DLSEFRKLPR EEEEEEDDD EEEKAPVTLL DAQSLAQSF NRLWEVAGQW QKQVPLAARA SQRQWLVSIIH AIRNTRRKME DRHVSLPSFN QLFGLSDPVN RAYFAVFDGH GGVDAARYAA VHVHTNAARQ PELPTDPEGA LREAFRRTDQ MFLRKAKRER LQSGTTGVCA LIAGATLHVA WLGDSQVILV QQGQVVKLME PHRPERQDEK ARIEALGGFV SHMDCWRVNG TLAVSRAIGD VFQKPYVSGE ADAASRALTG SEDYLLACD GFFDVVPHQE VVGLVQSHLT RQQGGLRVA EELVAAARER GSHDNITVMV VFLRDPQELL EGGNQGEQDP QAEGRRQDLP SSLPEPETQA PPRS
Characteristics:	Human PPM1F full-length ORF ( NP_055449.1, 1 a.a. - 454 a.a.) recombinant protein with GST-tag at N-terminal.

## Product Details

---

Purification: in vitro wheat germ expression system

## Target Details

---

Target: PPM1F

Alternative Name: PPM1F ([PPM1F Products](#))

Background: Full Gene Name: protein phosphatase 1F (PP2C domain containing)  
Synonyms: CaMKPase,FEM-2,KIAA0015,POPX2,hFEM-2

Gene ID: 9647

NCBI Accession: [NM\\_014634](#)

Pathways: [Positive Regulation of Endopeptidase Activity](#)

## Application Details

---

Application Notes: Optimal working dilution should be determined by the investigator.

Comment: Preparation method: in vitro, wheat germ expression system  
Product Quality tested by: 12.5% SDS-PAGE Stained with Coomassie Blue.

Restrictions: For Research Use only

## Handling

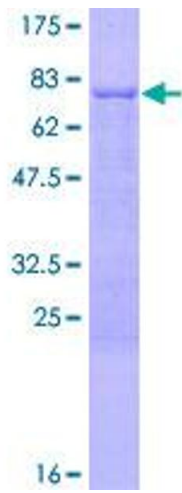
---

Buffer: 50 mM Tris-HCl, 10 mM reduced Glutathione, pH =8.0 in the elution buffer.

Handling Advice: Aliquot to avoid repeated freezing and thawing.

Storage: -80 °C

Storage Comment: Best use within three months from the date of receipt of this protein.



**Image 1.**