



[Go to Product page](#)

Datasheet for ABIN1315920

PPM1J Protein (AA 1-505) (GST tag)

1 Image

Overview

Quantity:	25 µg
Target:	PPM1J
Protein Characteristics:	AA 1-505
Origin:	Human
Source:	Wheat germ
Protein Type:	Recombinant
Purification tag / Conjugate:	This PPM1J protein is labelled with GST tag.
Application:	ELISA, Western Blotting (WB), Affinity Purification (AP), Antibody Array (AA)

Product Details

Purpose:	PPM1J (Human) Recombinant Protein (P01)
Sequence:	MLNRVRSAVA HLVSSGGAPP PRPKSPDLPN AASAPPAAAP EAPRSPPAKA GSGSATPAKA VEARASFSRP TFLQLSPGGL RRADDHAGRA VQSPDGTGRR LPWSTGYAEV INAGKSRHNE DQACCEVVYV EGRRSVTGVP REPSRQGLC FYYWGLFDGH AGGGAAEMAS RLLHRHIREQ LKDLVEILQD PSPPPLCLPT TPGTPDSSDP SHLLGPQSCW SSQKEVSHES LVVGAIENAF QLMDEQMARE RRGHQVEGGC CALVVIYLLG KVVVANAGDS RAIIVRNGEI IPMSREFTPE TERQRLQLLG FLKPELLGSE FTHLEFPRRV LPKELGQRML YRDQNMGTWA YKKIELEDLR FPLVCGEGKK ARVMATIGVT RGLGDHSLKV CSSTLPIKPF LSCFPEVRVY DLTQYEHCPD DVLVLGTDGL WDVTTDCEVA ATVDRVLSAY EPNDHSRYTA LAQALVLGAR GTPRDRGWRL PNNKLGSGDD ISVFIPLGG PGSYS
Characteristics:	Human PPM1J full-length ORF (AAH73828.1, 1 a.a. - 505 a.a.) recombinant protein with GST-tag at N-terminal.

Product Details

Purification: in vitro wheat germ expression system

Target Details

Target: PPM1J

Alternative Name: PPM1J ([PPM1J Products](#))

Background: Full Gene Name: protein phosphatase 1J (PP2C domain containing)
Synonyms: DKFZp434P1514,FLJ35951,MGC19531,MGC90149,PP2CZ,PP2Czeta,PPP2CZ

Gene ID: 333926

Application Details

Application Notes: Optimal working dilution should be determined by the investigator.

Comment: Preparation method: in vitro, wheat germ expression system
Product Quality tested by: 12.5% SDS-PAGE Stained with Coomassie Blue.

Restrictions: For Research Use only

Handling

Buffer: 50 mM Tris-HCl, 10 mM reduced Glutathione, pH =8.0 in the elution buffer.

Handling Advice: Aliquot to avoid repeated freezing and thawing.

Storage: -80 °C

Storage Comment: Best use within three months from the date of receipt of this protein.

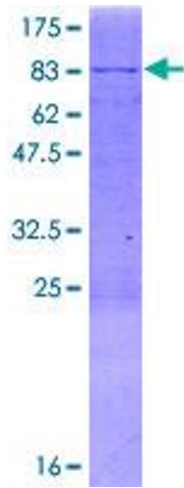


Image 1.