

Datasheet for ABIN1315941

PPP1CB Protein (AA 231-327) (GST tag)



[Go to Product page](#)

1 Image

Overview

Quantity:	10 µg
Target:	PPP1CB
Protein Characteristics:	AA 231-327
Origin:	Human
Source:	Wheat germ
Protein Type:	Recombinant
Purification tag / Conjugate:	This PPP1CB protein is labelled with GST tag.
Application:	ELISA, Western Blotting (WB), Affinity Purification (AP), Antibody Array (AA)

Product Details

Purpose:	PPP1CB (Human) Recombinant Protein (Q01)
Sequence:	VSKFLNRHDL DLICRAHQVV EDGYEFFAKR QLVTLSAPN YCGEFDNAGG MMSVDETLMC SFQILKPSEK KAKYQYGGLN SGRPVTTPRT ANPPKKR
Characteristics:	Human PPP1CB partial ORF (NP_002700, 231 a.a. - 327 a.a.) recombinant protein with GST-tag at N-terminal.
Purification:	in vitro wheat germ expression system

Target Details

Target:	PPP1CB
Alternative Name:	PPP1CB (PPP1CB Products)

Target Details

Background:	Full Gene Name: protein phosphatase 1, catalytic subunit, beta isoform Synonyms: MGC3672,PP-1B,PPP1CD
Gene ID:	5500
NCBI Accession:	NM_002709
Pathways:	M Phase , Cellular Glucan Metabolic Process , Regulation of Carbohydrate Metabolic Process , Lipid Metabolism

Application Details

Application Notes:	Optimal working dilution should be determined by the investigator.
Comment:	Preparation method: in vitro, wheat germ expression system Product Quality tested by: 12.5% SDS-PAGE Stained with Coomassie Blue.
Restrictions:	For Research Use only

Handling

Buffer:	50 mM Tris-HCl, 10 mM reduced Glutathione, pH =8.0 in the elution buffer.
Handling Advice:	Aliquot to avoid repeated freezing and thawing.
Storage:	-80 °C
Storage Comment:	Best use within three months from the date of receipt of this protein.

Images

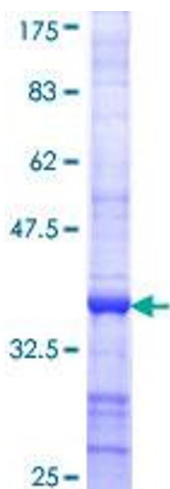


Image 1.