



[Go to Product page](#)

Datasheet for ABIN1315972

DARPP32 Protein (AA 1-168) (GST tag)

1 Image

Overview

Quantity:	10 µg
Target:	DARPP32 (PPP1R1B)
Protein Characteristics:	AA 1-168
Origin:	Human
Source:	Wheat germ
Protein Type:	Recombinant
Purification tag / Conjugate:	This DARPP32 protein is labelled with GST tag.
Application:	Western Blotting (WB), ELISA, Affinity Purification (AP), Antibody Array (AA)

Product Details

Purpose:	PPP1R1B (Human) Recombinant Protein (P01)
Sequence:	MLFRLSEHSS PEEEASPHQR ASGEGHHLKS KRPNPCAYTP PSLKAVQRIA ESHLQISISNL NENQASEEED ELGELRELGY PREEDEEEEE DDEEEEEEEED SQAELVKVIR QSAGQKTTCCG QGLEGPWERP PPLDESERDG GSEDQVEDPA LSEPGEEPQR PSPSEPGT
Characteristics:	Human PPP1R1B full-length ORF (AAH01519, 1 a.a. - 168 a.a.) recombinant protein with GST-tag at N-terminal.
Purification:	in vitro wheat germ expression system

Target Details

Target:	DARPP32 (PPP1R1B)
Alternative Name:	PPP1R1B (PPP1R1B Products)

Target Details

Background:	Full Gene Name: protein phosphatase 1, regulatory (inhibitor) subunit 1B Synonyms: DARPP-32,DARPP32,FLJ20940
Gene ID:	84152

Application Details

Application Notes:	Optimal working dilution should be determined by the investigator.
Comment:	Preparation method: in vitro, wheat germ expression system Product Quality tested by: 12.5% SDS-PAGE Stained with Coomassie Blue.
Restrictions:	For Research Use only

Handling

Buffer:	50 mM Tris-HCl, 10 mM reduced Glutathione, pH =8.0 in the elution buffer.
Handling Advice:	Aliquot to avoid repeated freezing and thawing.
Storage:	-80 °C
Storage Comment:	Best use within three months from the date of receipt of this protein.

Images

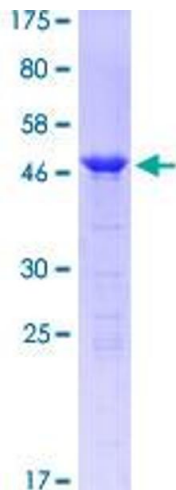


Image 1.