

Datasheet for ABIN1315976

**PPP1R1C Protein (AA 1-109) (GST tag)**[Go to Product page](#)**1** Image

## Overview

Quantity:	10 µg
Target:	PPP1R1C
Protein Characteristics:	AA 1-109
Origin:	Human
Source:	Wheat germ
Protein Type:	Recombinant
Purification tag / Conjugate:	This PPP1R1C protein is labelled with GST tag.
Application:	Western Blotting (WB), ELISA, Affinity Purification (AP), Antibody Array (AA)

## Product Details

Purpose:	PPP1R1C (Human) Recombinant Protein (P02)
Sequence:	MEPNSPKKIQ FAVPVFQSQI APEAAEQIRK RRPTASLVI LNEHNPPEID DKRGPNTQGE LQNASPKQRK QSVYTPPTIK GVKHLKGQNE SAFPEEEEGT NEREEQRDH
Characteristics:	Human PPP1R1C full-length ORF ( NP_001074014.1, 1 a.a. - 109 a.a.) recombinant protein with GST-tag at N-terminal.
Purification:	in vitro wheat germ expression system

## Target Details

Target:	PPP1R1C
Alternative Name:	PPP1R1C ( <a href="#">PPP1R1C Products</a> )

Target Details

Background:	Full Gene Name: protein phosphatase 1, regulatory (inhibitor) subunit 1C Synonyms: IPP5
Gene ID:	151242
NCBI Accession:	<a href="#">NM_001080545</a>

Application Details

Application Notes:	Optimal working dilution should be determined by the investigator.
Comment:	Preparation method: in vitro, wheat germ expression system Product Quality tested by: 12.5% SDS-PAGE Stained with Coomassie Blue.
Restrictions:	For Research Use only

Handling

Buffer:	50 mM Tris-HCl, 10 mM reduced Glutathione, pH =8.0 in the elution buffer.
Handling Advice:	Aliquot to avoid repeated freezing and thawing.
Storage:	-80 °C
Storage Comment:	Best use within three months from the date of receipt of this protein.

Images

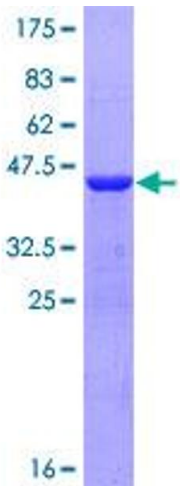


Image 1.