



[Go to Product page](#)

Datasheet for ABIN1315982

KLRAQ1 Protein (AA 1-363) (GST tag)

1 Image

Overview

Quantity:	25 µg
Target:	KLRAQ1
Protein Characteristics:	AA 1-363
Origin:	Human
Source:	Wheat germ
Protein Type:	Recombinant
Purification tag / Conjugate:	This KLRAQ1 protein is labelled with GST tag.
Application:	ELISA, Western Blotting (WB), Affinity Purification (AP), Antibody Array (AA)

Product Details

Purpose:	PPP1R21 (Human) Recombinant Protein (P01)
Sequence:	MASAEIQGKY QKLAQEYSKL RAQNQVLKKG VVDEQANSAA LKEQLKMKDQ SLRKLQEMD SLTFRNLQLA KRVELLQDEL ALSEPRGKKN KKSGESSSQL SQEQKSVFDE DLQKKIEENE RLHIQFFEAD EQHKHVEAEL RSRLATLETE AAQHQA VVDG LTRKYMETIE KLQNDKAKLE VKSQTLEKEA KECRLRTEEC QLQLKTLHED LSGRLEESLS IINEKVPFND TKYSQYNALN VPLHNRRHQL KMRDIAGQAL AFVQDLVTAL LNFHTYTEQR IQIFPVDSAI DTISPLNQKF SQYLHENASY VRPLEEGMLH LFESITEDTV TVLETTVKLK TFSEHLTSYI CFLRKILPYQ LKR
Characteristics:	Human PPP1R21 full-length ORF (AAH40721.1, 1 a.a. - 363 a.a.) recombinant protein with GST-tag at N-terminal.
Purification:	in vitro wheat germ expression system

Target Details

Target:	KLRAQ1
Alternative Name:	PPP1R21 (KLRAQ1 Products)
Background:	Full Gene Name: protein phosphatase 1, regulatory subunit 21 Synonyms: CCDC128, KLRAQ1
Gene ID:	129285

Application Details

Application Notes:	Optimal working dilution should be determined by the investigator.
Comment:	Preparation method: in vitro, wheat germ expression system Product Quality tested by: 12.5% SDS-PAGE Stained with Coomassie Blue.
Restrictions:	For Research Use only

Handling

Buffer:	50 mM Tris-HCl, 10 mM reduced Glutathione, pH =8.0 in the elution buffer.
Handling Advice:	Aliquot to avoid repeated freezing and thawing.
Storage:	-80 °C
Storage Comment:	Best use within three months from the date of receipt of this protein.

Images

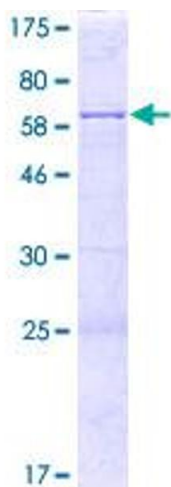


Image 1.