

Datasheet for ABIN1315985
PPP1R2P9 Protein (AA 1-202) (GST tag)



[Go to Product page](#)

1 Image

Overview

Quantity:	10 µg
Target:	PPP1R2P9
Protein Characteristics:	AA 1-202
Origin:	Human
Source:	Wheat germ
Protein Type:	Recombinant
Purification tag / Conjugate:	This PPP1R2P9 protein is labelled with GST tag.
Application:	ELISA, Western Blotting (WB), Affinity Purification (AP), Antibody Array (AA)

Product Details

Purpose:	PPP1R2P9 (Human) Recombinant Protein (P01)
Sequence:	MSASTSSHRP IKGILKNKSS SGSSVATSGQ QSGGTIQDVK RKKSQKWDES SILAAHRATY RDYDLMKANE PGTSYMSVQD NGEDSVRDVE GEDSVRGEV KEATDASDHS CEVDEQESSE AYMRKILLHK QEKKRQFEMR RRLHYNEELN IKLARQLMWK ELQSEDNENE ETPQGTNEEK TAAEESSEAP LTGGLQTQSC DP
Characteristics:	Human PPP1R2P9 full-length ORF (AAH56673.1, 1 a.a. - 202 a.a.) recombinant protein with GST-tag at N-terminal.
Purification:	in vitro wheat germ expression system

Target Details

Target:	PPP1R2P9
---------	----------

Target Details

Alternative Name:	PPP1R2P9 (PPP1R2P9 Products)
Background:	Full Gene Name: protein phosphatase 1, regulatory (inhibitor) subunit 2 pseudogene 9 Synonyms: I-4
Gene ID:	80316

Application Details

Application Notes:	Optimal working dilution should be determined by the investigator.
Comment:	Preparation method: in vitro, wheat germ expression system Product Quality tested by: 12.5% SDS-PAGE Stained with Coomassie Blue.
Restrictions:	For Research Use only

Handling

Buffer:	50 mM Tris-HCl, 10 mM reduced Glutathione, pH =8.0 in the elution buffer.
Handling Advice:	Aliquot to avoid repeated freezing and thawing.
Storage:	-80 °C
Storage Comment:	Best use within three months from the date of receipt of this protein.

Images

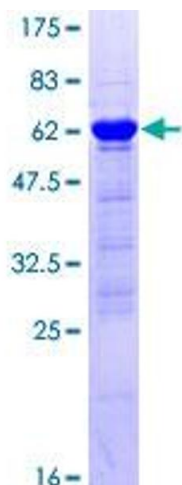


Image 1.