



[Go to Product page](#)

Datasheet for ABIN1315993

## PPP1R3C Protein (AA 1-317) (GST tag)

### 1 Image

#### Overview

Quantity:	10 µg
Target:	PPP1R3C
Protein Characteristics:	AA 1-317
Origin:	Human
Source:	Wheat germ
Protein Type:	Recombinant
Purification tag / Conjugate:	This PPP1R3C protein is labelled with GST tag.
Application:	Western Blotting (WB), ELISA, Affinity Purification (AP), Antibody Array (AA)

#### Product Details

Purpose:	PPP1R3C (Human) Recombinant Protein (P01)
Sequence:	MSCTRMIQVL DPRPLTSSVM PVDVAMRLCL AHSPPVKSFL GPYDEFQRRH FVNKLKPLKS CLNIKHKAKS QNDWKCSHNQ AKKRNVFADS KGLSLTAIHV FSDLPEEPAW DLQFDLLDLN DISSALKHHE EKNLILDFPQ PSTDYLSFRS HFQKNFVCLE NCSLQERTVT GTVKVKNVSF EKKVQIRITF DSWKNYTDVD CVYMKNVYGG TSDTFSFAI DLPPVIPTEQ KIEFCISYHA NGQVFDNND GQNYRIVHVQ WKPDGVQTQM APQDCAFHQT SPKTELESTI FGSPRLASGL FPEWQSWGRM ENLASYSR
Characteristics:	Human PPP1R3C full-length ORF ( AAH12625, 1 a.a. - 317 a.a.) recombinant protein with GST-tag at N-terminal.
Purification:	in vitro wheat germ expression system

## Target Details

Target:	PPP1R3C
Alternative Name:	PPP1R3C ( <a href="#">PPP1R3C Products</a> )
Background:	Full Gene Name: protein phosphatase 1, regulatory (inhibitor) subunit 3C Synonyms: PPP1R5
Gene ID:	5507
Pathways:	<a href="#">Cellular Glucan Metabolic Process</a> , <a href="#">Regulation of Carbohydrate Metabolic Process</a>

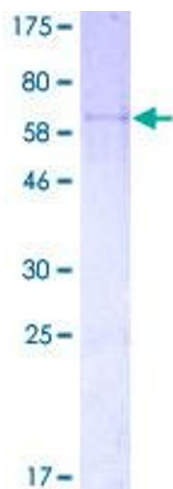
## Application Details

Application Notes:	Optimal working dilution should be determined by the investigator.
Comment:	Preparation method: in vitro, wheat germ expression system Product Quality tested by: 12.5% SDS-PAGE Stained with Coomassie Blue.
Restrictions:	For Research Use only

## Handling

Buffer:	50 mM Tris-HCl, 10 mM reduced Glutathione, pH =8.0 in the elution buffer.
Handling Advice:	Aliquot to avoid repeated freezing and thawing.
Storage:	-80 °C
Storage Comment:	Best use within three months from the date of receipt of this protein.

## Images



**Image 1.**