



[Go to Product page](#)

Datasheet for ABIN1315997

PPP1R42 Protein (AA 1-228) (GST tag)

1 Image

Overview

Quantity:	10 µg
Target:	PPP1R42
Protein Characteristics:	AA 1-228
Origin:	Human
Source:	Wheat germ
Protein Type:	Recombinant
Purification tag / Conjugate:	This PPP1R42 protein is labelled with GST tag.
Application:	ELISA, Western Blotting (WB), Affinity Purification (AP), Antibody Array (AA)

Product Details

Purpose:	PPP1R42 (Human) Recombinant Protein (P01)
Sequence:	MVRLTLDLIA RNSNLKPRKE ETISQCLKKI THINFSDKNI DAIEDLSLCK NLSVLYLYDN CISQITNLNY ATNLTHLYLQ NNCISCIENL RSLKKLEKLY LGGNYIAVIE GLEGLGELRE LHVENQRLPL GEKLLFDPRT LHSLAKSLCI LNISNNNIDD ITDLELLENL NQLIAVDNQL LHVKDLEFLL NKLMKLVKID LNGNPVCLKP KYRDRILILVS KSLGTYLY
Characteristics:	Human PPP1R42 full-length ORF (NP_001013648.1, 1 a.a. - 228 a.a.) recombinant protein with GST-tag at N-terminal.
Purification:	in vitro wheat germ expression system

Target Details

Target:	PPP1R42
---------	---------

Target Details

Alternative Name:	PPP1R42 (PPP1R42 Products)
Background:	Full Gene Name: protein phosphatase 1, regulatory subunit 42 Synonyms: LRRC67,TLLR,dtr
Gene ID:	286187
NCBI Accession:	NM_001013626

Application Details

Application Notes:	Optimal working dilution should be determined by the investigator.
Comment:	Preparation method: in vitro, wheat germ expression system Product Quality tested by: 12.5% SDS-PAGE Stained with Coomassie Blue.
Restrictions:	For Research Use only

Handling

Buffer:	50 mM Tris-HCl, 10 mM reduced Glutathione, pH =8.0 in the elution buffer.
Handling Advice:	Aliquot to avoid repeated freezing and thawing.
Storage:	-80 °C
Storage Comment:	Best use within three months from the date of receipt of this protein.

Images

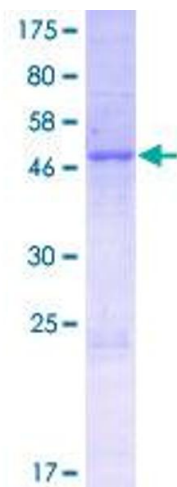


Image 1.