

Datasheet for ABIN1316006
PPP1R9A Protein (AA 1090-1188) (GST tag)



[Go to Product page](#)

1 Image

Overview

| | |
|-------------------------------|-------------------------------------------------------------------------------|
| Quantity: | 10 µg |
| Target: | PPP1R9A |
| Protein Characteristics: | AA 1090-1188 |
| Origin: | Human |
| Source: | Wheat germ |
| Protein Type: | Recombinant |
| Purification tag / Conjugate: | This PPP1R9A protein is labelled with GST tag. |
| Application: | ELISA, Western Blotting (WB), Affinity Purification (AP), Antibody Array (AA) |

Product Details

| | |
|------------------|------------------------------------------------------------------------------------------------------------------|
| Purpose: | PPP1R9A (Human) Recombinant Protein (Q01) |
| Sequence: | PCSTAQTSTR SPCMPFSWFN DSRKGSYSFR NLPAPTSSLQ PSPETLISDK KGSKNFTFND DFSPSSTSSA DLGSLGAEPK TPGLSQSLAL SSDESLEDMI |
| Characteristics: | Human PPP1R9A partial ORF (XP_371933, 1090 a.a. - 1188 a.a.) recombinant protein with GST-tag at N-terminal. |
| Purification: | in vitro wheat germ expression system |

Target Details

| | |
|-------------------|----------------------------------------------|
| Target: | PPP1R9A |
| Alternative Name: | PPP1R9A (PPP1R9A Products) |

Target Details

| | |
|-----------------|------------------------------------------------------------------------------------------------------------------------------|
| Background: | Full Gene Name: protein phosphatase 1, regulatory (inhibitor) subunit 9A Synonyms: FLJ20068,KIAA1222,NRB1,NRBI,Neurabin-I |
| Gene ID: | 55607 |
| NCBI Accession: | XM_371933 |

Application Details

| | |
|--------------------|--------------------------------------------------------------------------------------------------------------------------------------|
| Application Notes: | Optimal working dilution should be determined by the investigator. |
| Comment: | Preparation method: in vitro, wheat germ expression system Product Quality tested by: 12.5% SDS-PAGE Stained with Coomassie Blue. |
| Restrictions: | For Research Use only |

Handling

| | |
|------------------|---------------------------------------------------------------------------|
| Buffer: | 50 mM Tris-HCl, 10 mM reduced Glutathione, pH =8.0 in the elution buffer. |
| Handling Advice: | Aliquot to avoid repeated freezing and thawing. |
| Storage: | -80 °C |
| Storage Comment: | Best use within three months from the date of receipt of this protein. |

Images

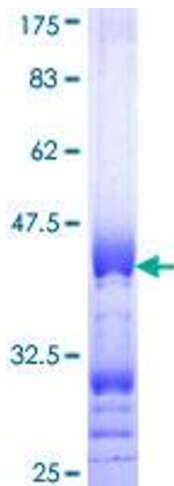


Image 1.