



[Go to Product page](#)

Datasheet for ABIN1316012

PPP2CB Protein (AA 1-309) (GST tag)

1 Image

Overview

Quantity:	10 µg
Target:	PPP2CB
Protein Characteristics:	AA 1-309
Origin:	Human
Source:	Wheat germ
Protein Type:	Recombinant
Purification tag / Conjugate:	This PPP2CB protein is labelled with GST tag.
Application:	ELISA, Western Blotting (WB), Affinity Purification (AP), Antibody Array (AA)

Product Details

Purpose:	PPP2CB (Human) Recombinant Protein (P01)
Sequence:	MDDKAFTKEL DQWVEQLNEC KQLNENQVRT LCEKAKEILT KESNVQEVRC PVTVCGDVHG QFHDLMELFR IGGKSPDTNY LFMGDYVDRG YYSVETVLL VALKVRYPER ITILRGNHES RQITQVYGFY DECLRKYGNA NWWKYFTDLF DYLPALTALVD GQIFCLHGGL SPSIDTLDHI RALDRLQEVN HEGPMCDLLW SDPDDRRGGWG ISPRGAGYTF GQDISETFNH ANGLTLVSRA HQLVMEGYNW CHDRNVVTIF SAPNYCYRCG NQAAIMELDD TLKYSFLQFD PAPRRGEPHV TRRTPDYFL
Characteristics:	Human PPP2CB full-length ORF (AAH12022, 1 a.a. - 309 a.a.) recombinant protein with GST-tag at N-terminal.
Purification:	in vitro wheat germ expression system

Target Details

Target:	PPP2CB
Alternative Name:	PPP2CB (PPP2CB Products)
Background:	Full Gene Name: protein phosphatase 2 (formerly 2A), catalytic subunit, beta isoform Synonyms: PP2CB
Gene ID:	5516
Pathways:	Mitotic G1-G1/S Phases , Hepatitis C , Toll-Like Receptors Cascades

Application Details

Application Notes:	Optimal working dilution should be determined by the investigator.
Comment:	Preparation method: in vitro, wheat germ expression system Product Quality tested by: 12.5% SDS-PAGE Stained with Coomassie Blue.
Restrictions:	For Research Use only

Handling

Buffer:	50 mM Tris-HCl, 10 mM reduced Glutathione, pH =8.0 in the elution buffer.
Handling Advice:	Aliquot to avoid repeated freezing and thawing.
Storage:	-80 °C
Storage Comment:	Best use within three months from the date of receipt of this protein.

Images

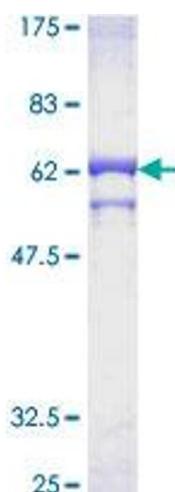


Image 1.