

Datasheet for ABIN1316018
PPP2R1B Protein (AA 500-599) (GST tag)



[Go to Product page](#)

1 Image

Overview

Quantity:	10 µg
Target:	PPP2R1B
Protein Characteristics:	AA 500-599
Origin:	Human
Source:	Wheat germ
Protein Type:	Recombinant
Purification tag / Conjugate:	This PPP2R1B protein is labelled with GST tag.
Application:	ELISA, Western Blotting (WB), Affinity Purification (AP), Antibody Array (AA)

Product Details

Purpose:	PPP2R1B (Human) Recombinant Protein (Q01)
Sequence:	VMANDPNYLH RMTTLFCINA LSEACGQEIT TKQMLPIVLK MAGDQVANVR FNVAKSLQKI GPILDTNALQ GEVKPVLQKL GQDEDMDVKY FAQEAISVVA
Characteristics:	Human PPP2R1B partial ORF (AAH27596, 500 a.a. - 599 a.a.) recombinant protein with GST-tag at N-terminal.
Purification:	in vitro wheat germ expression system

Target Details

Target:	PPP2R1B
Alternative Name:	PPP2R1B (PPP2R1B Products)

Target Details

Background:	Full Gene Name: protein phosphatase 2 (formerly 2A), regulatory subunit A, beta isoform Synonyms: MGC26454,PR65B
Gene ID:	5519
Pathways:	PI3K-Akt Signaling , Mitotic G1-G1/S Phases , Hepatitis C , Toll-Like Receptors Cascades

Application Details

Application Notes:	Optimal working dilution should be determined by the investigator.
Comment:	Preparation method: in vitro, wheat germ expression system Product Quality tested by: 12.5% SDS-PAGE Stained with Coomassie Blue.
Restrictions:	For Research Use only

Handling

Buffer:	50 mM Tris-HCl, 10 mM reduced Glutathione, pH =8.0 in the elution buffer.
Handling Advice:	Aliquot to avoid repeated freezing and thawing.
Storage:	-80 °C
Storage Comment:	Best use within three months from the date of receipt of this protein.

Images

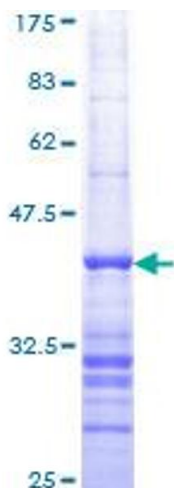


Image 1.