

Datasheet for ABIN1316036

## PPP2R3B Protein (AA 1-225) (GST tag)



[Go to Product page](#)

### 1 Image

#### Overview

Quantity:	10 µg
Target:	PPP2R3B
Protein Characteristics:	AA 1-225
Origin:	Human
Source:	Wheat germ
Protein Type:	Recombinant
Purification tag / Conjugate:	This PPP2R3B protein is labelled with GST tag.
Application:	ELISA, Western Blotting (WB), Affinity Purification (AP), Antibody Array (AA)

#### Product Details

Purpose:	PPP2R3B (Human) Recombinant Protein (P01)
Sequence:	MIDRIFSGAV TRGRKVQKEG KISYADFVWF LISEEDKKTP TSIEYWFRM DLDGDGALSM FELEYFYEEQ CRRLDMAIE ALPFQDCLCQ MLDLVKPRTE GKITLQDLKR CKLANVFFDT FFNIEKYLDH EQKEQISLLR DGDSGGPELS DWEKYAAEEY DILVAEETAG EPWEDGFEE LSPVEQKLSA LRSPLAQRPF FEAPSPLGAV DLYEYACGDE DLEPL
Characteristics:	Human PPP2R3B full-length ORF ( AAH11180, 1 a.a. - 225 a.a.) recombinant protein with GST-tag at N-terminal.
Purification:	in vitro wheat germ expression system

#### Target Details

Target:	PPP2R3B
---------	---------

## Target Details

Alternative Name:	PPP2R3B ( <a href="#">PPP2R3B Products</a> )
Background:	Full Gene Name: protein phosphatase 2 (formerly 2A), regulatory subunit B", beta Synonyms: NY-REN-8,PPP2R3L,PPP2R3LY,PR48
Gene ID:	28227
Pathways:	<a href="#">PI3K-Akt Signaling</a> , <a href="#">Mitotic G1-G1/S Phases</a>

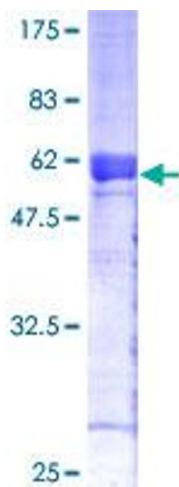
## Application Details

Application Notes:	Optimal working dilution should be determined by the investigator.
Comment:	Preparation method: in vitro, wheat germ expression system Product Quality tested by: 12.5% SDS-PAGE Stained with Coomassie Blue.
Restrictions:	For Research Use only

## Handling

Buffer:	50 mM Tris-HCl, 10 mM reduced Glutathione, pH =8.0 in the elution buffer.
Handling Advice:	Aliquot to avoid repeated freezing and thawing.
Storage:	-80 °C
Storage Comment:	Best use within three months from the date of receipt of this protein.

## Images



**Image 1.**