



[Go to Product page](#)

Datasheet for ABIN1316038

PPP2R3B Protein (AA 1-176) (GST tag)

1 Image

Overview

Quantity:	10 µg
Target:	PPP2R3B
Protein Characteristics:	AA 1-176
Origin:	Human
Source:	Wheat germ
Protein Type:	Recombinant
Purification tag / Conjugate:	This PPP2R3B protein is labelled with GST tag.
Application:	ELISA, Western Blotting (WB), Affinity Purification (AP), Antibody Array (AA)

Product Details

Purpose:	PPP2R3B (Human) Recombinant Protein (P02)
Sequence:	MDLDGDGALS MFELEYFYEE QCRRLDMAI EALPFQDCLC QMLDLVKPRT EGKITLQDLK RCKLANVFFD TFFNIEKYLD HEQKEQISLL RDGDSGGPEL SDWEKYAAEE YDILVAEETA GEPWEDGFEA ELSPVEQKLS ALRSPLAQRP FFEAPSPLGA VDLYEYACGD EDLESL
Characteristics:	Human PPP2R3B full-length ORF (AAH09032, 1 a.a. - 176 a.a.) recombinant protein with GST-tag at N-terminal.
Purification:	in vitro wheat germ expression system

Target Details

Target:	PPP2R3B
Alternative Name:	PPP2R3B (PPP2R3B Products)

Target Details

Background:	Full Gene Name: protein phosphatase 2 (formerly 2A), regulatory subunit B", beta Synonyms: NY-REN-8,PPP2R3L,PPP2R3LY,PR48
Gene ID:	28227
Pathways:	PI3K-Akt Signaling , Mitotic G1-G1/S Phases

Application Details

Application Notes:	Optimal working dilution should be determined by the investigator.
Comment:	Preparation method: in vitro, wheat germ expression system Product Quality tested by: 12.5% SDS-PAGE Stained with Coomassie Blue.
Restrictions:	For Research Use only

Handling

Buffer:	50 mM Tris-HCl, 10 mM reduced Glutathione, pH =8.0 in the elution buffer.
Handling Advice:	Aliquot to avoid repeated freezing and thawing.
Storage:	-80 °C
Storage Comment:	Best use within three months from the date of receipt of this protein.

Images

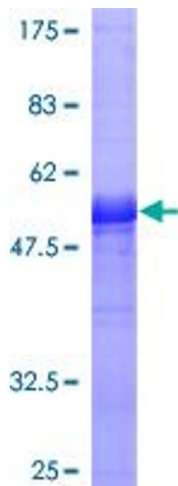


Image 1.