



[Go to Product page](#)

Datasheet for ABIN1316044

PPP2R4 Protein (AA 21-120) (GST tag)

1 Image

Overview

| | |
|-------------------------------|---|
| Quantity: | 10 µg |
| Target: | PPP2R4 |
| Protein Characteristics: | AA 21-120 |
| Origin: | Human |
| Source: | Wheat germ |
| Protein Type: | Recombinant |
| Purification tag / Conjugate: | This PPP2R4 protein is labelled with GST tag. |
| Application: | Western Blotting (WB), ELISA, Affinity Purification (AP), Antibody Array (AA) |

Product Details

| | |
|------------------|--|
| Purpose: | PPP2R4 (Human) Recombinant Protein (Q01) |
| Sequence: | QNFIIPKKEI HTVPDMGKWK RSQAYADYIG FILTLNEGVK GKKLTFEYRV SEAIEKLVAL LNTLDRWIDE TPPVDQPSRF GNKAYRTWYA KLDEEAENLV |
| Characteristics: | Human PPP2R4 partial ORF (NP_066954, 21 a.a. - 120 a.a.) recombinant protein with GST-tag at N-terminal. |
| Purification: | in vitro wheat germ expression system |

Target Details

| | |
|-------------------|--|
| Target: | PPP2R4 |
| Alternative Name: | PPP2R4 (PPP2R4 Products) |

Target Details

| | |
|-----------------|---|
| Background: | Full Gene Name: protein phosphatase 2A activator, regulatory subunit 4 Synonyms: MGC2184,PP2A,PR53,PTPA |
| Gene ID: | 5524 |
| NCBI Accession: | NM_021131 |
| Pathways: | PI3K-Akt Signaling , M Phase , Hepatitis C , Toll-Like Receptors Cascades |

Application Details

| | |
|--------------------|--|
| Application Notes: | Optimal working dilution should be determined by the investigator. |
| Comment: | Preparation method: in vitro, wheat germ expression system Product Quality tested by: 12.5% SDS-PAGE Stained with Coomassie Blue. |
| Restrictions: | For Research Use only |

Handling

| | |
|------------------|---|
| Buffer: | 50 mM Tris-HCl, 10 mM reduced Glutathione, pH =8.0 in the elution buffer. |
| Handling Advice: | Aliquot to avoid repeated freezing and thawing. |
| Storage: | -80 °C |
| Storage Comment: | Best use within three months from the date of receipt of this protein. |

Images

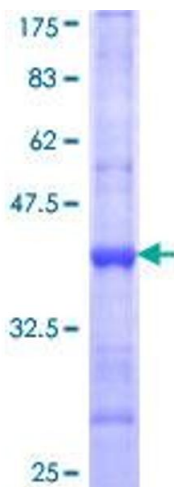


Image 1.