



[Go to Product page](#)

Datasheet for ABIN1316087

PPP4R1L Protein (AA 1-415) (GST tag)

1 Image

Overview

Quantity:	10 µg
Target:	PPP4R1L
Protein Characteristics:	AA 1-415
Origin:	Human
Source:	Wheat germ
Protein Type:	Recombinant
Purification tag / Conjugate:	This PPP4R1L protein is labelled with GST tag.
Application:	ELISA, Western Blotting (WB), Affinity Purification (AP), Antibody Array (AA)

Product Details

Purpose:	PPP4R1L (Human) Recombinant Protein (P01)
Sequence:	MAEIPLYFVD LQDDLDDYGF EDYGTDCDNM RVTAFLDIPG QDNLPLTRL EKYAFSENTF NRQIIARGLL DIFRDFGNNE EDFLTVM EIV VRLSEDAEPT VRTELMEQIP PIAIFLQENR SNFPVVLSEY LIPIVVRYLT DPNNQIICKM ASMLSKSTVE RLLLPRFCGL CGDRKLFQVR KVCAANFGDI CHAVGQEATE KFLIPKFFEL CSDAVWGM RK ACAECFTAVS HSSSPGVRRT QLFPLFIRLV SDPCRWWHQA AFQSLGPFTS TSANPSRAGL YLREDGALS I WPLTQDLDSG FASGSPAPSS GGNTSPASLT RSAKPVRSEP ELPVEGTS AK TSDCPHSSSS SDGPAESPVE SCVSAGA EWT RVSPETSACS KLSMDNDLPI SSYPGSDSWA CPGNTEDVFS HFLYW
Characteristics:	Human PPP4R1L full-length ORF (AAI00980.1, 1 a.a. - 415 a.a.) recombinant protein with GST-tag at N-terminal.
Purification:	in vitro wheat germ expression system

Target Details

Target:	PPP4R1L
Alternative Name:	PPP4R1L (PPP4R1L Products)
Background:	Full Gene Name: protein phosphatase 4, regulatory subunit 1-like Synonyms: C20orf192,PRO1085
Gene ID:	55370

Application Details

Application Notes:	Optimal working dilution should be determined by the investigator.
Comment:	Preparation method: in vitro, wheat germ expression system Product Quality tested by: 12.5% SDS-PAGE Stained with Coomassie Blue.
Restrictions:	For Research Use only

Handling

Buffer:	50 mM Tris-HCl, 10 mM reduced Glutathione, pH =8.0 in the elution buffer.
Handling Advice:	Aliquot to avoid repeated freezing and thawing.
Storage:	-80 °C
Storage Comment:	Best use within three months from the date of receipt of this protein.

Images

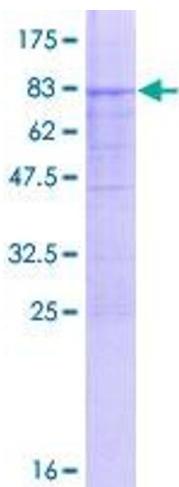


Image 1.