

Datasheet for ABIN1316112
PQLC2 Protein (AA 1-226) (GST tag)



[Go to Product page](#)

1 Image

Overview

Quantity:	10 µg
Target:	PQLC2
Protein Characteristics:	AA 1-226
Origin:	Human
Source:	Wheat germ
Protein Type:	Recombinant
Purification tag / Conjugate:	This PQLC2 protein is labelled with GST tag.
Application:	ELISA, Western Blotting (WB), Affinity Purification (AP), Antibody Array (AA)

Product Details

Purpose:	PQLC2 (Human) Recombinant Protein (P01)
Sequence:	MDQALSLWFL LGWIGGDSCN LIGSFLADQL PLQTYTAVYY VLADLVMLTL YFYKFRTRP SLLSAPINSV LLFLMGMACA TPLLSAAGPV AAPREAFRGR ALLSVESGSK PFTRQEVI VIGSISSVLY LLSRLPQIRT NFLRKSTQGI SYSLFALVML GNTLYGLSVL LKNPEEGQSE GSYLLHHLPPV LVGSLGVLLL DTIISIQLV YRRSTAASEL EPLLPS
Characteristics:	Human PQLC2 full-length ORF (NP_001035215.1, 1 a.a. - 226 a.a.) recombinant protein with GST-tag at N-terminal.
Purification:	in vitro wheat germ expression system

Target Details

Target:	PQLC2
---------	-------

Target Details

Alternative Name:	PQLC2 (PQLC2 Products)
Background:	Full Gene Name: PQ loop repeat containing 2 Synonyms: FLJ20320,FLJ23906,FLJ26661,FLJ26665
Gene ID:	54896
NCBI Accession:	NM_001040126

Application Details

Application Notes:	Optimal working dilution should be determined by the investigator.
Comment:	Preparation method: in vitro, wheat germ expression system Product Quality tested by: 12.5% SDS-PAGE Stained with Coomassie Blue.
Restrictions:	For Research Use only

Handling

Buffer:	50 mM Tris-HCl, 10 mM reduced Glutathione, pH =8.0 in the elution buffer.
Handling Advice:	Aliquot to avoid repeated freezing and thawing.
Storage:	-80 °C
Storage Comment:	Best use within three months from the date of receipt of this protein.

Images

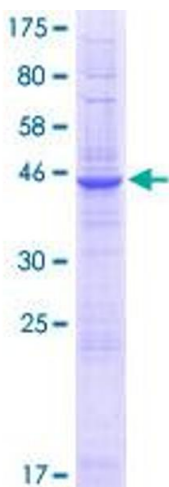


Image 1.