

Datasheet for ABIN1316176
PRELP Protein (AA 281-365) (GST tag)



[Go to Product page](#)

1 Image

Overview

Quantity:	10 µg
Target:	PRELP
Protein Characteristics:	AA 281-365
Origin:	Human
Source:	Wheat germ
Protein Type:	Recombinant
Purification tag / Conjugate:	This PRELP protein is labelled with GST tag.
Application:	Western Blotting (WB), ELISA, Affinity Purification (AP), Antibody Array (AA)

Product Details

Purpose:	PRELP (Human) Recombinant Protein (Q01)
Sequence:	RGLPKNSFNI SNLLVLHLSH NRISSVPAIN NRLEHLYLNN NSIEKINGTQ ICPNDLVAFH DFSSDLENVP HLRYLRLDGN YLKPP
Characteristics:	Human PRELP partial ORF (NP_002716.1, 281 a.a. - 365 a.a.) recombinant protein with GST-tag at N-terminal.
Purification:	in vitro wheat germ expression system

Target Details

Target:	PRELP
Alternative Name:	PRELP (PRELP Products)

Target Details

Background:	Full Gene Name: proline/arginine-rich end leucine-rich repeat protein Synonyms: MGC45323,MST161,MSTP161,SLRR2A
Gene ID:	5549
NCBI Accession:	NM_002725
Pathways:	Glycosaminoglycan Metabolic Process

Application Details

Application Notes:	Optimal working dilution should be determined by the investigator.
Comment:	Preparation method: in vitro, wheat germ expression system Product Quality tested by: 12.5% SDS-PAGE Stained with Coomassie Blue.
Restrictions:	For Research Use only

Handling

Buffer:	50 mM Tris-HCl, 10 mM reduced Glutathione, pH =8.0 in the elution buffer.
Handling Advice:	Aliquot to avoid repeated freezing and thawing.
Storage:	-80 °C
Storage Comment:	Best use within three months from the date of receipt of this protein.

Images

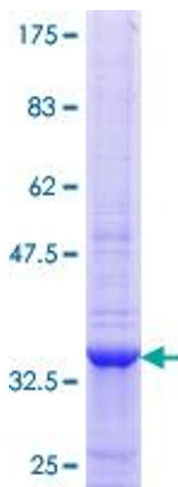


Image 1.