

Datasheet for ABIN1316180  
**PREP Protein (AA 611-710) (GST tag)**



[Go to Product page](#)

1 Image

## Overview

Quantity:	10 µg
Target:	PREP
Protein Characteristics:	AA 611-710
Origin:	Human
Source:	Wheat germ
Protein Type:	Recombinant
Purification tag / Conjugate:	This PREP protein is labelled with GST tag.
Application:	ELISA, Western Blotting (WB), Affinity Purification (AP), Antibody Array (AA)

## Product Details

Purpose:	PREP (Human) Recombinant Protein (Q01)
Sequence:	LVKYSPLHNV KLPEADDIQY PSMLLLADH DDRVPLHSL KFIATLQYIV GRSRKQSNPL LIHVDTKAGH GAGKPTAKVI EEVSDMFAFI ARCLNVDWIP
Characteristics:	Human PREP partial ORF ( NP_002717.3, 611 a.a. - 710 a.a.) recombinant protein with GST-tag at N-terminal.
Purification:	in vitro wheat germ expression system

## Target Details

Target:	PREP
Alternative Name:	PREP ( <a href="#">PREP Products</a> )

## Target Details

Background: Full Gene Name: prolyl endopeptidase  
Synonyms: MGC16060,PE,PEP

Gene ID: 5550

NCBI Accession: [NM\\_002726](#)

## Application Details

Application Notes: Optimal working dilution should be determined by the investigator.

Comment: Preparation method: in vitro, wheat germ expression system  
Product Quality tested by: 12.5% SDS-PAGE Stained with Coomassie Blue.

Restrictions: For Research Use only

## Handling

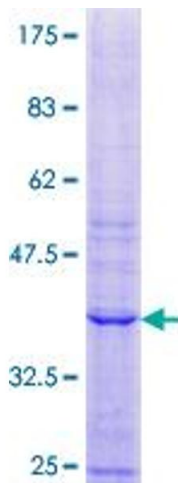
Buffer: 50 mM Tris-HCl, 10 mM reduced Glutathione, pH =8.0 in the elution buffer.

Handling Advice: Aliquot to avoid repeated freezing and thawing.

Storage: -80 °C

Storage Comment: Best use within three months from the date of receipt of this protein.

## Images



**Image 1.**