



[Go to Product page](#)

Datasheet for ABIN1316187
PRG2 Protein (AA 123-222) (GST tag)

1 Image

Overview

Quantity:	2 µg
Target:	PRG2
Protein Characteristics:	AA 123-222
Origin:	Human
Source:	Wheat germ
Protein Type:	Recombinant
Purification tag / Conjugate:	This PRG2 protein is labelled with GST tag.
Application:	ELISA, Western Blotting (WB), Affinity Purification (AP), Antibody Array (AA)

Product Details

Purpose:	PRG2 (Human) Recombinant Protein (Q01)
Sequence:	FTCRRRCYRGN LVSIHNFNIN YRIQCSVSAL NQGQVWIGGR ITGSGRCRRF QWVDGSRWNF AYWAAHQPWS RGGHCVALCT RGGYWRRRAHC LRRLPFICSY
Characteristics:	Human PRG2 partial ORF (AAH05929, 123 a.a. - 222 a.a.) recombinant protein with GST-tag at N-terminal.
Purification:	in vitro wheat germ expression system

Target Details

Target:	PRG2
Alternative Name:	PRG2 (PRG2 Products)

Target Details

Background:	Full Gene Name: proteoglycan 2, bone marrow (natural killer cell activator, eosinophil granule major basic protein) Synonyms: BMPG,MBP,MBP1,MGC14537
Gene ID:	5553

Application Details

Application Notes:	Optimal working dilution should be determined by the investigator.
Comment:	Preparation method: in vitro, wheat germ expression system Product Quality tested by: 12.5% SDS-PAGE Stained with Coomassie Blue.
Restrictions:	For Research Use only

Handling

Buffer:	50 mM Tris-HCl, 10 mM reduced Glutathione, pH =8.0 in the elution buffer.
Handling Advice:	Aliquot to avoid repeated freezing and thawing.
Storage:	-80 °C
Storage Comment:	Best use within three months from the date of receipt of this protein.

Images

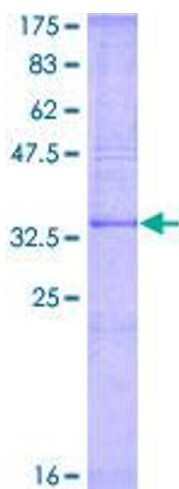


Image 1.