

Datasheet for ABIN1316198

PRICKLE3 Protein (AA 1-615) (GST tag)



[Go to Product page](#)

1 Image

Overview

Quantity:	10 µg
Target:	PRICKLE3
Protein Characteristics:	AA 1-615
Origin:	Human
Source:	Wheat germ
Protein Type:	Recombinant
Purification tag / Conjugate:	This PRICKLE3 protein is labelled with GST tag.
Application:	ELISA, Western Blotting (WB), Affinity Purification (AP), Antibody Array (AA)

Product Details

Purpose:	LMO6 (Human) Recombinant Protein (P01)
Sequence:	MFARGSRRRR SGRAPPEAED PDRGQPCNSC REQCPGFLH GWRKICQHCK CPREEHAVHA VPVDLERIMC RLISDFQRHS ISDDDSGCAS EEWAVPPGL KPEQVYQFFS CLPEDKVPYV NSPGEKYRIK QLLHQLPPHD SEAQYCTALE EEEKKELRAF SQQRKRENLG RGIVRIFPVT ITGAICEECG KQIGGGDIIV FASRAGLGAC WHPQCFVCTT CQELLVDLIY FYHVGKVVYCG RHHAELRPR CQACDEIIFS PECTEAEGRH WHMDHFCCFE CEASLGGQRY VMRQSRPHCC ACYEARHA EY CDGCGEHIGL DQGQMAYEGQ HWHASDRFCF CSRCGRALLG RPFLPRRGLI FCSRACSLGS EPTAPGPSRR SWSAGPVTAP LAASTASFSA VKGASETTTK GTSTELAPAT GPEEPSRFLR GAPHRHSMPE LGLRSVPEPP PESPGQPNLR PDDSAFGRQS TPRVSFRDPL VSEGGPRRTL SAPPQRRRP RSPPPRAPSRR RHHHHHHHHH HHHNRHPSRRR HYQC DAGSGS DSESCSSSPS SSSSESEDD GFFLGERIPL PPHLCRPMMPA QDTAMETFNS PLSLSLPRDSR AGMPRQARDK NCIVA

Product Details

Characteristics: Human LMO6 full-length ORF (AAH16856, 1 a.a. - 615 a.a.) recombinant protein with GST-tag at N-terminal.

Purification: in vitro wheat germ expression system

Target Details

Target: PRICKLE3

Alternative Name: PRICKLE3 ([PRICKLE3 Products](#))

Background: Full Gene Name: prickle homolog 3 (Drosophila)
Synonyms: LMO6

Gene ID: 4007

Application Details

Application Notes: Optimal working dilution should be determined by the investigator.

Comment: Preparation method: in vitro, wheat germ expression system
Product Quality tested by: 12.5% SDS-PAGE Stained with Coomassie Blue.

Restrictions: For Research Use only

Handling

Buffer: 50 mM Tris-HCl, 10 mM reduced Glutathione, pH =8.0 in the elution buffer.

Handling Advice: Aliquot to avoid repeated freezing and thawing.

Storage: -80 °C

Storage Comment: Best use within three months from the date of receipt of this protein.

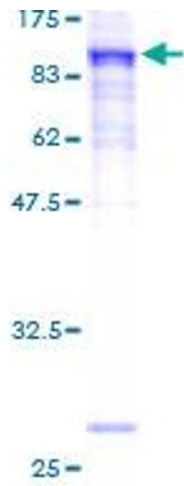


Image 1.