



[Go to Product page](#)

Datasheet for ABIN1316239

PRKAG3 Protein (AA 1-489) (GST tag)

1 Image

Overview

Quantity:	10 µg
Target:	PRKAG3
Protein Characteristics:	AA 1-489
Origin:	Human
Source:	Wheat germ
Protein Type:	Recombinant
Purification tag / Conjugate:	This PRKAG3 protein is labelled with GST tag.
Application:	Western Blotting (WB), ELISA, Affinity Purification (AP), Antibody Array (AA)

Product Details

Purpose:	PRKAG3 (Human) Recombinant Protein (P01)
Sequence:	MEPGLEHALR RTPSWSSLGG SEHQEMSFL E QENSSSWPSP AVTSSSERIR GKRRAKALRW TRQKSVEEGE PPGQGEGPRS RPAAESTGLE ATFPKTTPLA QADPAGVGTP PTGWDCLPSD CTASAAGSST DDVELATEFP ATEAWECELE GLLLEERPALC LSPQAPFPKL GWDELKPKG AQIYMRFMQE HTCYDAMATS SKLVIFDTML EIKKAFFALV ANGVRAAPLW DSKKQSFVGM LTITDFILVL HRYRSPVLQ IYEIEQHKIE TWREIYLQGC FKPLVSISPND SLFEAVYTL IKNRIHRLPV LDPVSGNVLH ILTHKRLKLF LHIFGSLLPR PSFLYRTIQD LGIGTFRDLA VVLETAPILT ALDIFVDRRV SALPVVNECG QVVGLYSRFD VIHLAAQQTY NHLDMSVGEA LRQRTLCLG VLSCQPHESL GEVIDRIARE QVHRLVLVDE TQHLLGVVSL SDILQALVLS PAGIDALGA
Characteristics:	Human PRKAG3 full-length ORF (NP_059127.2, 1 a.a. - 489 a.a.) recombinant protein with GST-tag at N-terminal.

Product Details

Purification: in vitro wheat germ expression system

Target Details

Target: PRKAG3

Alternative Name: PRKAG3 ([PRKAG3 Products](#))

Background: Full Gene Name: protein kinase, AMP-activated, gamma 3 non-catalytic subunit
Synonyms: AMPKG3

Gene ID: 53632

NCBI Accession: [NM_017431](#)

Pathways: [AMPK Signaling](#), [Cellular Glucan Metabolic Process](#), [Warburg Effect](#)

Application Details

Application Notes: Optimal working dilution should be determined by the investigator.

Comment: Preparation method: in vitro, wheat germ expression system
Product Quality tested by: 12.5% SDS-PAGE Stained with Coomassie Blue.

Restrictions: For Research Use only

Handling

Buffer: 50 mM Tris-HCl, 10 mM reduced Glutathione, pH =8.0 in the elution buffer.

Handling Advice: Aliquot to avoid repeated freezing and thawing.

Storage: -80 °C

Storage Comment: Best use within three months from the date of receipt of this protein.

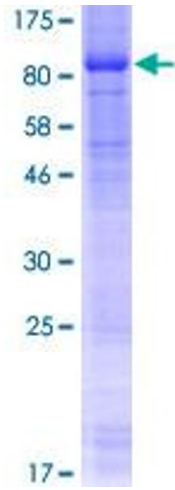


Image 1.