



[Go to Product page](#)

Datasheet for ABIN1316265

PKC gamma Protein (AA 260-351) (GST tag)

1 Image

Overview

Quantity:	10 µg
Target:	PKC gamma (PRKCG)
Protein Characteristics:	AA 260-351
Origin:	Human
Source:	Wheat germ
Protein Type:	Recombinant
Purification tag / Conjugate:	This PKC gamma protein is labelled with GST tag.
Application:	Western Blotting (WB), ELISA, Affinity Purification (AP), Antibody Array (AA)

Product Details

Purpose:	PRKCG (Human) Recombinant Protein (Q01)
Sequence:	SFGVSELLKA PVDGWYKLLN QEEGEYYNVP VADADNCSLL QKFEACNYPL ELYERVRMGP SSSPIPSPSP SPTDPKRCFF GASPGRLHIS DF
Characteristics:	Human PRKCG partial ORF (AAH47876, 260 a.a. - 351 a.a.) recombinant protein with GST-tag at N-terminal.
Purification:	in vitro wheat germ expression system

Target Details

Target:	PKC gamma (PRKCG)
Alternative Name:	PRKCG (PRKCG Products)

Target Details

Background:	Full Gene Name: protein kinase C, gamma Synonyms: MGC57564,PKC-gamma,PKCC,PKCG,SCA14
Gene ID:	5582
Pathways:	WNT Signaling , EGFR Signaling Pathway , Neurotrophin Signaling Pathway , Thyroid Hormone Synthesis , Myometrial Relaxation and Contraction , G-protein mediated Events , Positive Regulation of Response to DNA Damage Stimulus , Interaction of EGFR with phospholipase C-gamma , Thromboxane A2 Receptor Signaling , VEGF Signaling

Application Details

Application Notes:	Optimal working dilution should be determined by the investigator.
Comment:	Preparation method: in vitro, wheat germ expression system Product Quality tested by: 12.5% SDS-PAGE Stained with Coomassie Blue.
Restrictions:	For Research Use only

Handling

Buffer:	50 mM Tris-HCl, 10 mM reduced Glutathione, pH =8.0 in the elution buffer.
Handling Advice:	Aliquot to avoid repeated freezing and thawing.
Storage:	-80 °C
Storage Comment:	Best use within three months from the date of receipt of this protein.

Images

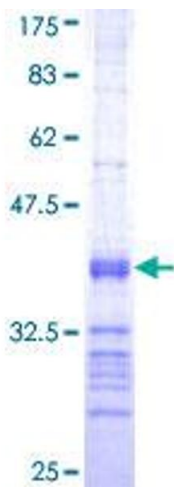


Image 1.