

Datasheet for ABIN1316278

**PRKCSH Protein (AA 268-377) (GST tag)**[Go to Product page](#)**1** Image

## Overview

Quantity:	10 µg
Target:	PRKCSH
Protein Characteristics:	AA 268-377
Origin:	Human
Source:	Wheat germ
Protein Type:	Recombinant
Purification tag / Conjugate:	This PRKCSH protein is labelled with GST tag.
Application:	ELISA, Western Blotting (WB), Affinity Purification (AP), Antibody Array (AA)

## Product Details

Purpose:	PRKCSH (Human) Recombinant Protein (Q01)
Sequence:	ISDFDGPNGE FAYLYSQCYE LTTNEYVYRL CPFKLVSQKP KLGGSPTSLG TWGSWIGPDH DKFSAMKYEQ GTGCWQGP NR STTVRLLCGK ETMVTSTTEP SRCEYLMELM
Characteristics:	Human PRKCSH partial ORF ( AAH13586, 268 a.a. - 377 a.a.) recombinant protein with GST-tag at N-terminal.
Purification:	in vitro wheat germ expression system

## Target Details

Target:	PRKCSH
Alternative Name:	PRKCSH ( <a href="#">PRKCSH Products</a> )

## Target Details

Background:	Full Gene Name: protein kinase C substrate 80K-H Synonyms: AGE-R2,G19P1,PCLD,PLD1
Gene ID:	5589
Pathways:	<a href="#">Cellular Glucan Metabolic Process</a> , <a href="#">Methionine Biosynthetic Process</a>

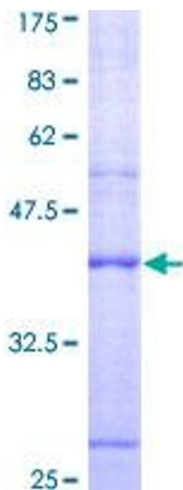
## Application Details

Application Notes:	Optimal working dilution should be determined by the investigator.
Comment:	Preparation method: in vitro, wheat germ expression system Product Quality tested by: 12.5% SDS-PAGE Stained with Coomassie Blue.
Restrictions:	For Research Use only

## Handling

Buffer:	50 mM Tris-HCl, 10 mM reduced Glutathione, pH =8.0 in the elution buffer.
Handling Advice:	Aliquot to avoid repeated freezing and thawing.
Storage:	-80 °C
Storage Comment:	Best use within three months from the date of receipt of this protein.

## Images



**Image 1.**