

Datasheet for ABIN1316337
PRMT6 Protein (AA 1-316) (GST tag)



[Go to Product page](#)

1 Image

Overview

Quantity:	10 µg
Target:	PRMT6
Protein Characteristics:	AA 1-316
Origin:	Human
Source:	Wheat germ
Protein Type:	Recombinant
Purification tag / Conjugate:	This PRMT6 protein is labelled with GST tag.
Application:	ELISA, Western Blotting (WB), Affinity Purification (AP), Antibody Array (AA)

Product Details

Purpose:	PRMT6 (Human) Recombinant Protein (P01)
Sequence:	MIADRVRTDA YRLGILRNWA ALRGKTVLDV GAGTGILSIF CAQAGARRVY AVEASAIWQQ AREVVRFNGL EDRVHVLPGP VETVELPEQV DAIVSEWMGY GLLHESMLSS VLHARTKWLK EGLLLLPASA ELFIAPISDQ MLEWRLGFWS QVKQHYGVDM SCLEGFATRC LMGHSEIVVQ GLSGEDVLAR PQRFAQLELS RAGLEQELEA GVGGFRFCSC YGSAPMHGFA IWFQVTFPGG ESEKPLVLST SPFHPTHWK QALLYLNEPV QVEQDQTDVSG EITLLPSRDN PRRLRVLLRY KVG DQEEKTK DFAMED
Characteristics:	Human PRMT6 full-length ORF (NP_060607.1, 1 a.a. - 316 a.a.) recombinant protein with GST-tag at N-terminal.
Purification:	in vitro wheat germ expression system

Target Details

Target:	PRMT6
Alternative Name:	PRMT6 (PRMT6 Products)
Background:	Full Gene Name: protein arginine methyltransferase 6 Synonyms: FLJ10559,HRMT1L6
Gene ID:	55170
NCBI Accession:	NM_018137

Application Details

Application Notes:	Optimal working dilution should be determined by the investigator.
Comment:	Preparation method: in vitro, wheat germ expression system Product Quality tested by: 12.5% SDS-PAGE Stained with Coomassie Blue.
Restrictions:	For Research Use only

Handling

Buffer:	50 mM Tris-HCl, 10 mM reduced Glutathione, pH =8.0 in the elution buffer.
Handling Advice:	Aliquot to avoid repeated freezing and thawing.
Storage:	-80 °C
Storage Comment:	Best use within three months from the date of receipt of this protein.

Images

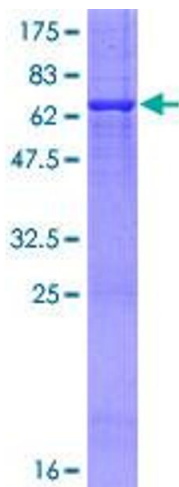


Image 1.