



[Go to Product page](#)

Datasheet for ABIN1316355
PROC Protein (AA 1-461) (GST tag)

1 Image

Overview

Quantity:	10 µg
Target:	PROC
Protein Characteristics:	AA 1-461
Origin:	Human
Source:	Wheat germ
Protein Type:	Recombinant
Purification tag / Conjugate:	This PROC protein is labelled with GST tag.
Application:	Western Blotting (WB), ELISA, Affinity Purification (AP), Antibody Array (AA)

Product Details

Purpose:	PROC (Human) Recombinant Protein (P01)
Sequence:	MWQLTSLLLF VATWGISGTP APLDSVFSSS ERAHQVLRIR KRANSFLEEL RHSSLERECI EEICDFEEAK EIFQNVDLTL AFWSKHVDGD QCLVLPLEHP CASLCCGHGT CIDGIGSFSC DCRSGWEGRF CQREVSFLNC SLDNGGCTHY CLEEVGWRRRC SCAPGYKLGD DLLQCHPAVK FPCGRPWKRM EKKRSHLKRD TEDQEQVDP RLIDGKMTRR GDSPWQVLL DSKKKLACGA VLIHPSWVLT AAHCMDSESK LLVRLGEYDL RRWEKWELDL DIKEVFVHPN YSKSTTDNDI ALLHLAQPAT LSQTIVPICL PDSGLAEREL NQAGQETLVT GWGYHSSREK EAKRNRTFVL NFIKIPVVPVH NECSEVMSNM VSENMLCAGI LGDRQDACEG DSGGPMVASF HGTWFLVGLV SWGEGCGLLH NYGVYTKVSR YLDWIHGHIR DKEAPQKSWA P
Characteristics:	Human PROC full-length ORF (NP_000303.1, 1 a.a. - 461 a.a.) recombinant protein with GST-tag at N-terminal.

Product Details

Purification: in vitro wheat germ expression system

Target Details

Target: PROC

Alternative Name: PROC ([PROC Products](#))

Target Type: Viral Protein

Background: Full Gene Name: protein C (inactivator of coagulation factors Va and VIIIa)
Synonyms: PC,PROC1

Gene ID: 5624

NCBI Accession: [NM_000312](#)

Application Details

Application Notes: Optimal working dilution should be determined by the investigator.

Comment: Preparation method: in vitro, wheat germ expression system
Product Quality tested by: 12.5% SDS-PAGE Stained with Coomassie Blue.

Restrictions: For Research Use only

Handling

Buffer: 50 mM Tris-HCl, 10 mM reduced Glutathione, pH =8.0 in the elution buffer.

Handling Advice: Aliquot to avoid repeated freezing and thawing.

Storage: -80 °C

Storage Comment: Best use within three months from the date of receipt of this protein.

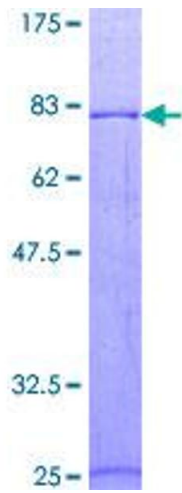


Image 1.