



[Go to Product page](#)

Datasheet for ABIN1316372

## ProSAPiP1 Protein (AA 1-673) (GST tag)

### 1 Image

#### Overview

Quantity:	25 µg
Target:	ProSAPiP1 (PROSAPiP1)
Protein Characteristics:	AA 1-673
Origin:	Human
Source:	Wheat germ
Protein Type:	Recombinant
Purification tag / Conjugate:	This ProSAPiP1 protein is labelled with GST tag.
Application:	ELISA, Western Blotting (WB), Affinity Purification (AP), Antibody Array (AA)

#### Product Details

Purpose:	ProSAPiP1 (Human) Recombinant Protein (P01)
Sequence:	<p>MAKLETLPVR ADPGRDPLLA FAPRPSELGP PDPRLAMGSV GSGVAHAQEF AMKSVGTRTG</p> <p>GGGSQGSFPG PRGSGSGASR ERPGRYPSED KGLANSLYLN GELRGSDHTD VCGNVVGSSG</p> <p>GSSSSGGSDK APPQYREPSH PPKLLATSGK LDQCSEPLVR PSAFKPVVPK NFHSMQNLCP</p> <p>PQTNGTPEGR QGPGGLKGG LDKSRTMTPAG GSGSGLSDSG RNSLTSLPTY SSSYSQHLAP</p> <p>LSASTSHINR IGTASYGSGS GGSSGGGSGY QDLGTSDSGR ASSKSGSSSS MGRPGHLGSG</p> <p>EGGGGLPFA ACSPPSPSAL IQELEERLWE KEQEVAALRR SLEQSEAAVA QVLEERQKAW</p> <p>ERELAE LRQG CSGKLQQVAR RAQRAQQLQ LQVLR LQQDK KQLQEEAARL MRQREELEDK</p> <p>VAACQKEQAD FLPRIETKW EVCQKAGEIS LLKQQLKDSQ ADVSQKLSEI VGLRSQ LREG</p> <p>RASLREKEEQ LLSLRDSFSS KQASLELGEG ELPAACLKPA LTPVDPAEPQ DALATCESDE</p> <p>AKMRRQAGVA AAASLVSDG EAEAGGESGT RALRREVGR LQALAAERRA RERQGASFAE</p> <p>ERRVWLEEKE KVIEYQKQLQ LSYVEMYQRN QQLERRLRER GAAGGASTPT PQHGEEKKAW</p>

## Product Details

---

TPSRLERIES TEI

Characteristics: Human ProSAPiP1 full-length ORF ( NP\_055546.1, 1 a.a. - 673 a.a.) recombinant protein with GST-tag at N-terminal.

Purification: in vitro wheat germ expression system

## Target Details

---

Target: ProSAPiP1 (PROSAPiP1)

Alternative Name: ProSAPiP1 ([PROSAPiP1 Products](#))

Background: Full Gene Name: ProSAPiP1 protein  
Synonyms: KIAA0552

Gene ID: 9762

NCBI Accession: [NM\\_014731](#)

## Application Details

---

Application Notes: Optimal working dilution should be determined by the investigator.

Comment: Preparation method: in vitro, wheat germ expression system  
Product Quality tested by: 12.5% SDS-PAGE Stained with Coomassie Blue.

Restrictions: For Research Use only

## Handling

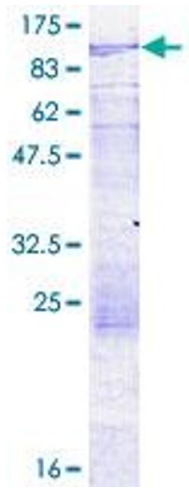
---

Buffer: 50 mM Tris-HCl, 10 mM reduced Glutathione, pH =8.0 in the elution buffer.

Handling Advice: Aliquot to avoid repeated freezing and thawing.

Storage: -80 °C

Storage Comment: Best use within three months from the date of receipt of this protein.



**Image 1.**