



[Go to Product page](#)

Datasheet for ABIN1316383

PRP19 Protein (AA 1-504) (GST tag)

1 Image

Overview

Quantity:	10 µg
Target:	PRP19 (PRPF19)
Protein Characteristics:	AA 1-504
Origin:	Human
Source:	Wheat germ
Protein Type:	Recombinant
Purification tag / Conjugate:	This PRP19 protein is labelled with GST tag.
Application:	Western Blotting (WB), ELISA, Affinity Purification (AP), Antibody Array (AA)

Product Details

Purpose:	PRPF19 (Human) Recombinant Protein (P01)
Sequence:	MSLICISNE VPEHPCVSPV SNHVYERRLI EKZIAENGTD PINNQPLSEE QLIDIKVAHP IRPKPPSATS IPAILKALQD EWDAVMLHSF TLRQQLQTTR QELSHALYQH DAACRVIARL TKEVTAAREA LATLKPQAGL IVPQAVPSSQ PSVVGAGEPM DLGELVGMTP EIIQKLQDKA TVLTTERRKKR GKTVPEELVK PEELSKYRQV ASHVGLHSAS IPGILALDLC PSDTNKILTG GADKNVVVFD KSSEQILATL KGHTKKVTSV VFHPSQDLVF SASPDATIRI WSVPNASCVQ VVRAHESAVT GLSLHATGDY LLSSDDQYW AFSDIQTGRV LTKVTDETSV CSLTCAQFHP DGLIFGTGTM DSQIKIWDLK ERTNVANFPG HSGPITSIAF SENGYYLATA ADDSSVKLWD LRKLNFKTL QLDNNFEVKS LIFDQSGTYL ALGGTDVQIY ICKQWTEILH FTEHSGLTG VAFGHHAKFI ASTGMDRSLK FYSL
Characteristics:	Human PRPF19 full-length ORF (NP_055317.1, 1 a.a. - 504 a.a.) recombinant protein with GST-tag at N-terminal.

Product Details

Purification: in vitro wheat germ expression system

Target Details

Target: PRP19 (PRPF19)

Alternative Name: PRPF19 ([PRPF19 Products](#))

Background: Full Gene Name: PRP19/PSO4 pre-mRNA processing factor 19 homolog (*S. cerevisiae*)
Synonyms: NMP200,PRP19,PSO4,SNEV,UBOX4,hPSO4

Gene ID: 27339

NCBI Accession: [NM_014502](#)

Pathways: [Ribonucleoprotein Complex Subunit Organization](#)

Application Details

Application Notes: Optimal working dilution should be determined by the investigator.

Comment: Preparation method: in vitro, wheat germ expression system
Product Quality tested by: 12.5% SDS-PAGE Stained with Coomassie Blue.

Restrictions: For Research Use only

Handling

Buffer: 50 mM Tris-HCl, 10 mM reduced Glutathione, pH =8.0 in the elution buffer.

Handling Advice: Aliquot to avoid repeated freezing and thawing.

Storage: -80 °C

Storage Comment: Best use within three months from the date of receipt of this protein.

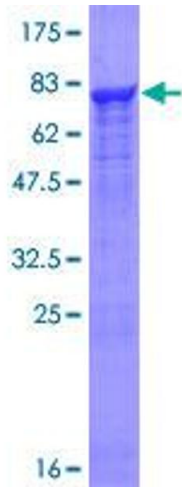


Image 1.