



[Go to Product page](#)

Datasheet for ABIN1316391

PRPF31 Protein (AA 400-499) (GST tag)

1 Image

Overview

Quantity:	10 µg
Target:	PRPF31
Protein Characteristics:	AA 400-499
Origin:	Human
Source:	Wheat germ
Protein Type:	Recombinant
Purification tag / Conjugate:	This PRPF31 protein is labelled with GST tag.
Application:	ELISA, Western Blotting (WB), Affinity Purification (AP), Antibody Array (AA)

Product Details

Purpose:	PRPF31 (Human) Recombinant Protein (Q01)
Sequence:	GKSGSGRVRQ TQVNEATKAR ISKTLQRTLQ KQSWVYGGKS TIRDRSSGTA SSVAFPLQG LEIVNPQAAE KKVAEANQKY FSSMAEFLKV KGEKSGLMST
Characteristics:	Human PRPF31 partial ORF (NP_056444, 400 a.a. - 499 a.a.) recombinant protein with GST-tag at N-terminal.
Purification:	in vitro wheat germ expression system

Target Details

Target:	PRPF31
Alternative Name:	PRPF31 (PRPF31 Products)

Target Details

Background:	Full Gene Name: PRP31 pre-mRNA processing factor 31 homolog (S. cerevisiae) Synonyms: DKFZp566J153,NY-BR-99,PRP31,RP11
Gene ID:	26121
NCBI Accession:	NM_015629
Pathways:	Ribonucleoprotein Complex Subunit Organization

Application Details

Application Notes:	Optimal working dilution should be determined by the investigator.
Comment:	Preparation method: in vitro, wheat germ expression system Product Quality tested by: 12.5% SDS-PAGE Stained with Coomassie Blue.
Restrictions:	For Research Use only

Handling

Buffer:	50 mM Tris-HCl, 10 mM reduced Glutathione, pH =8.0 in the elution buffer.
Handling Advice:	Aliquot to avoid repeated freezing and thawing.
Storage:	-80 °C
Storage Comment:	Best use within three months from the date of receipt of this protein.

Images

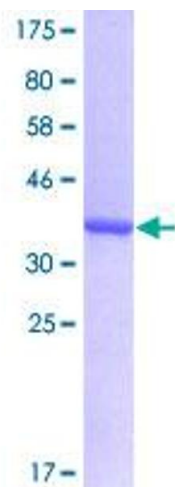


Image 1.