



[Go to Product page](#)

Datasheet for ABIN1316402

## PRPF8 Protein (AA 1-267) (GST tag)

### 1 Image

#### Overview

Quantity:	25 µg
Target:	PRPF8
Protein Characteristics:	AA 1-267
Origin:	Human
Source:	Wheat germ
Protein Type:	Recombinant
Purification tag / Conjugate:	This PRPF8 protein is labelled with GST tag.
Application:	Affinity Purification (AP), Antibody Array (AA), ELISA, Western Blotting (WB)

#### Product Details

Purpose:	PRPF8 (Human) Recombinant Protein (P01)
Sequence:	MAGVFPYRGP GNPVPGPLAP LPDYMSEEKL QEKARKWQQL QAKRYAEKRK FGFVDAQKED MPPEHVRKII RDHGDMTNRK FRHDKRVYLG ALKYMPhAVL KLENMPMPW EQIRDVPVLY HITGAISFVN EIPWVIEPVY ISQWGSWMIM MRREKRDRRH FKRMRFPPFD DEEPLDYAD NILDVEPLEA IQLELDPEED APVLDWFYDH QPLRDSRKYV NGSTYQRWQF TLPMMSPMP RSWLTTHLGM ARRPLSSHAA SRQAPVH
Characteristics:	Human PRPF8 full-length ORF ( AAH00579.1, 1 a.a. - 267 a.a.) recombinant protein with GST-tag at N-terminal.
Purification:	in vitro wheat germ expression system

## Target Details

Target:	PRPF8
Alternative Name:	PRPF8 ( <a href="#">PRPF8 Products</a> )
Background:	Full Gene Name: PRP8 pre-mRNA processing factor 8 homolog ( <i>S. cerevisiae</i> ) Synonyms: HPRP8,PRP8,PRPC8,RP13
Gene ID:	10594

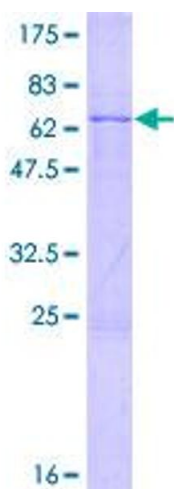
## Application Details

Application Notes:	Optimal working dilution should be determined by the investigator.
Comment:	Preparation method: in vitro, wheat germ expression system Product Quality tested by: 12.5% SDS-PAGE Stained with Coomassie Blue.
Restrictions:	For Research Use only

## Handling

Buffer:	50 mM Tris-HCl, 10 mM reduced Glutathione, pH =8.0 in the elution buffer.
Handling Advice:	Aliquot to avoid repeated freezing and thawing.
Storage:	-80 °C
Storage Comment:	Best use within three months from the date of receipt of this protein.

## Images



**Image 1.**