



[Go to Product page](#)

Datasheet for ABIN1316403

Peripherin Protein (PRPH) (AA 1-470) (GST tag)

1 Image

1 Publication

Overview

Quantity:	10 µg
Target:	Peripherin (PRPH)
Protein Characteristics:	AA 1-470
Origin:	Human
Source:	Wheat germ
Protein Type:	Recombinant
Purification tag / Conjugate:	This Peripherin protein is labelled with GST tag.
Application:	Western Blotting (WB), ELISA, Affinity Purification (AP), Antibody Array (AA)

Product Details

Purpose:	PRPH (Human) Recombinant Protein (P01)
Sequence:	MSHHPSGLRA GFSSTSYRRT FGPPPSLSPG AFSYSSSSRF SSSRLLGSAS PSSSVRLGSF RSPRAGAGAL LRLPSERLDF SMAEALNQEF LATRSNEKQE LQELNDRFAN FIEKVRFLEQ QNAALRGELS QARGQEPARA DQLCQQELRE LRRELELLGR ERDRVQVERD GLAEDLAALK QRLEEETRKR EDAEHNLVLF RKDVDDATLS RLELERKIES LMDEIEFLKK LHEEELRDLO VSVESQQVQQ VEVEATVKPE LTAALDIRA QYESIAAKNL QEAEWYKSK YADLSDAANR NHEALRQAKQ EMNESRRRIQ SLTCEVDGLR GTNEALLRQL RELEEQFALE AGGYQAGAAR LEEELRQLKE EMARHLREYQ ELLNVKMALD IEIATYRKLK EGEESRISVP VHSFASLNIK TTVPEVEPPQ DSHSRKTVLI KTIETRNGEV VTESQKEQRS ELDKSSAHSY
Characteristics:	Human PRPH full-length ORF (NP_006253.2, 1 a.a. - 470 a.a.) recombinant protein with GST-tag at N-terminal.

Product Details

Purification: in vitro wheat germ expression system

Target Details

Target: Peripherin (PRPH)

Alternative Name: PRPH ([PRPH Products](#))

Background: Full Gene Name: peripherin
Synonyms: NEF4,PRPH1

Gene ID: 5630

NCBI Accession: [NM_006262](#)

Application Details

Application Notes: Optimal working dilution should be determined by the investigator.

Comment: Preparation method: in vitro, wheat germ expression system
Product Quality tested by: 12.5% SDS-PAGE Stained with Coomassie Blue.

Restrictions: For Research Use only

Handling

Buffer: 50 mM Tris-HCl, 10 mM reduced Glutathione, pH =8.0 in the elution buffer.

Handling Advice: Aliquot to avoid repeated freezing and thawing.

Storage: -80 °C

Storage Comment: Best use within three months from the date of receipt of this protein.

Publications

Product cited in: Mizuno, Fujita, Takatama, Okamoto: "Peripherin partially localizes in Bunina bodies in amyotrophic lateral sclerosis." in: **Journal of the neurological sciences**, Vol. 302, Issue 1-2, pp. 14-8, (2011) ([PubMed](#)).

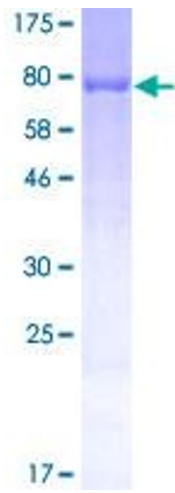


Image 1.