



[Go to Product page](#)

Datasheet for ABIN1316409

## PRPS1 Protein (AA 1-100) (GST tag)

### 1 Image

#### Overview

Quantity:	10 µg
Target:	PRPS1
Protein Characteristics:	AA 1-100
Origin:	Human
Source:	Wheat germ
Protein Type:	Recombinant
Purification tag / Conjugate:	This PRPS1 protein is labelled with GST tag.
Application:	ELISA, Western Blotting (WB), Affinity Purification (AP), Antibody Array (AA)

#### Product Details

Purpose:	PRPS1 (Human) Recombinant Protein (Q01)
Sequence:	MPNIKIFSGS SHQDLSQKIA DRLGLELGKV VTKKFSNQET CVEIGESVRG EDVYIVQSGC GEINDNLMEL LIMINACKIA SASRVTAVIP CFPYARQDKK
Characteristics:	Human PRPS1 partial ORF ( NP_002755, 1 a.a. - 100 a.a.) recombinant protein with GST-tag at N-terminal.
Purification:	in vitro wheat germ expression system

#### Target Details

Target:	PRPS1
Alternative Name:	PRPS1 ( <a href="#">PRPS1 Products</a> )

## Target Details

---

Background:	Full Gene Name: phosphoribosyl pyrophosphate synthetase 1 Synonyms: ARTS,CMTX5,KIAA0967,PPRibP,PRSI
Gene ID:	5631
NCBI Accession:	<a href="#">NM_002764</a>
Pathways:	<a href="#">Ribonucleoside Biosynthetic Process</a>

## Application Details

---

Application Notes:	Optimal working dilution should be determined by the investigator.
Comment:	Preparation method: in vitro, wheat germ expression system Product Quality tested by: 12.5% SDS-PAGE Stained with Coomassie Blue.
Restrictions:	For Research Use only

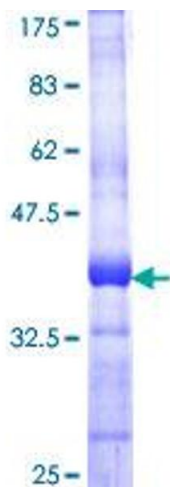
## Handling

---

Buffer:	50 mM Tris-HCl, 10 mM reduced Glutathione, pH =8.0 in the elution buffer.
Handling Advice:	Aliquot to avoid repeated freezing and thawing.
Storage:	-80 °C
Storage Comment:	Best use within three months from the date of receipt of this protein.

## Images

---



**Image 1.**