



[Go to Product page](#)

Datasheet for ABIN1316428

Proline Rich 13 Protein (PRR13) (AA 1-148) (GST tag)

1 Image

Overview

Quantity:	10 µg
Target:	Proline Rich 13 (PRR13)
Protein Characteristics:	AA 1-148
Origin:	Human
Source:	Wheat germ
Protein Type:	Recombinant
Purification tag / Conjugate:	This Proline Rich 13 protein is labelled with GST tag.
Application:	ELISA, Western Blotting (WB), Antibody Array (AA), Affinity Purification (AP)

Product Details

Purpose:	PRR13 (Human) Recombinant Protein (P01)
Sequence:	MWNPNAGQPG PNPYPPNIGC PGGSNPAHPP PINPPFPPGP CPPPPGAPHG NPAFPPGGPP HPVPQPGYPG CQPLGPYPPP YPPPAPGIPP VNPLAPGMVG PAVIVDKKMQ KKMKKAHKKM HKHQKHHKYH KHGKHSSSSS SSSSSDSD
Characteristics:	Human PRR13 full-length ORF (ADZ15792.1, 1 a.a. - 148 a.a.) recombinant protein with GST tag at N-terminal.
Purification:	in vitro wheat germ expression system

Target Details

Target:	Proline Rich 13 (PRR13)
Alternative Name:	PRR13 (PRR13 Products)

Target Details

Background: Full Gene Name: proline rich 13
Synonyms: DKFZp564J157,FLJ23818,TXR1

Gene ID: 54458

Application Details

Application Notes: Optimal working dilution should be determined by the investigator.

Comment: Preparation method: in vitro, wheat germ expression system
Product Quality tested by: 12.5% SDS-PAGE Stained with Coomassie Blue

Restrictions: For Research Use only

Handling

Buffer: 50 mM Tris-HCl, 10 mM reduced Glutathione, pH =8.0 in the elution buffer.

Handling Advice: Aliquot to avoid repeated freezing and thawing.

Storage: -80 °C

Storage Comment: Best use within three months from the date of receipt of this protein.

Images

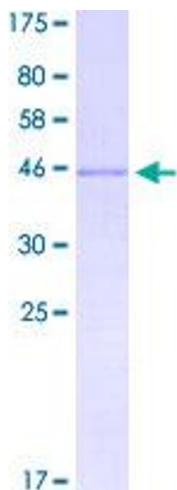


Image 1.