



[Go to Product page](#)

Datasheet for ABIN1316432

PRR16 Protein (AA 1-234) (GST tag)

1 Image

Overview

Quantity:	10 µg
Target:	PRR16
Protein Characteristics:	AA 1-234
Origin:	Human
Source:	Wheat germ
Protein Type:	Recombinant
Purification tag / Conjugate:	This PRR16 protein is labelled with GST tag.
Application:	ELISA, Western Blotting (WB), Affinity Purification (AP), Antibody Array (AA)

Product Details

Purpose:	LOC51334 (Human) Recombinant Protein (P01)
Sequence:	MTDSSKTDTL NSSSSGTTAS SLEKIKVQAN APLIKPPAHT SAILTVLRKP NPPPPPPRLT PVKCEDPKRV VPTANPVKTN GTLLRNGGLP GGNPKIPNGD ICCIPNSNLD KAPVQLLMHR PEKDRCPQAG PRERVRFNEK VQYHGYCPDC DTRYNIKNRE VHLHSEPVHP PGKIPHQGPP LPPTPHLPPF PLENGGMGIS HSNSFPPIRP ATVPPPTAPK PQKTILRKST TTTV
Characteristics:	Human LOC51334 full-length ORF (AAH38838.1, 1 a.a. - 234 a.a.) recombinant protein with GST-tag at N-terminal.
Purification:	in vitro wheat germ expression system

Target Details

Target:	PRR16
---------	-------

Target Details

Alternative Name:	PRR16 (PRR16 Products)
Background:	Full Gene Name: proline rich 16 Synonyms: DSC54,MGC104614
Gene ID:	51334

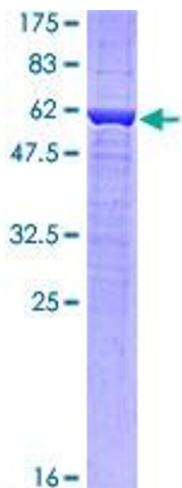
Application Details

Application Notes:	Optimal working dilution should be determined by the investigator.
Comment:	Preparation method: in vitro, wheat germ expression system Product Quality tested by: 12.5% SDS-PAGE Stained with Coomassie Blue.
Restrictions:	For Research Use only

Handling

Buffer:	50 mM Tris-HCl, 10 mM reduced Glutathione, pH =8.0 in the elution buffer.
Handling Advice:	Aliquot to avoid repeated freezing and thawing.
Storage:	-80 °C
Storage Comment:	Best use within three months from the date of receipt of this protein.

Images



SDS-PAGE

Image 1.