



[Go to Product page](#)

Datasheet for ABIN1316451

## PRRG4 Protein (AA 1-226) (GST tag)

### 1 Image

#### Overview

Quantity:	10 µg
Target:	PRRG4
Protein Characteristics:	AA 1-226
Origin:	Human
Source:	Wheat germ
Protein Type:	Recombinant
Purification tag / Conjugate:	This PRRG4 protein is labelled with GST tag.
Application:	ELISA, Western Blotting (WB), Affinity Purification (AP), Antibody Array (AA)

#### Product Details

Purpose:	PRRG4 (Human) Recombinant Protein (P01)
Sequence:	MFTLLVLLSQ LPTVTLGFPH CARGPKASKH AGEEVFTSKE EANFFIHRRL LYNRFDLELF TPGNLERECN EELCNYYEAR EIFVDEDKTI AFWQEYSAKG PTTKSDGNRE KIDVMGLLTG LIAAGVFLVI FLLGYLICI TKCNRLQHPC SSAVYERGRH TPSIIFRRPE EAALSPLPPS VEDAGLPSYE QAVALTRKHS VSPPPYPYGGH TKGFRVFKKS MSLPSH
Characteristics:	Human PRRG4 full-length ORF ( NP_076986.1, 1 a.a. - 226 a.a.) recombinant protein with GST-tag at N-terminal.
Purification:	in vitro wheat germ expression system

#### Target Details

Target:	PRRG4
---------	-------

## Target Details

Alternative Name:	PRRG4 ( <a href="#">PRRG4 Products</a> )
Background:	Full Gene Name: proline rich Gla (G-carboxyglutamic acid) 4 (transmembrane) Synonyms: PRGP4,TMG4
Gene ID:	79056
NCBI Accession:	<a href="#">NM_024081</a>

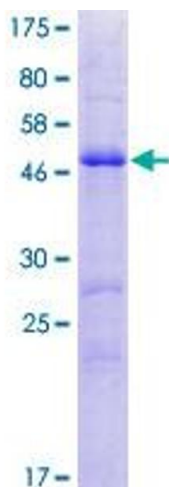
## Application Details

Application Notes:	Optimal working dilution should be determined by the investigator.
Comment:	Preparation method: in vitro, wheat germ expression system Product Quality tested by: 12.5% SDS-PAGE Stained with Coomassie Blue.
Restrictions:	For Research Use only

## Handling

Buffer:	50 mM Tris-HCl, 10 mM reduced Glutathione, pH =8.0 in the elution buffer.
Handling Advice:	Aliquot to avoid repeated freezing and thawing.
Storage:	-80 °C
Storage Comment:	Best use within three months from the date of receipt of this protein.

## Images



**Image 1.**