

Datasheet for ABIN1316547

PSKH2 Protein (AA 286-385) (GST tag)



[Go to Product page](#)

1 Image

Overview

Quantity:	2 µg
Target:	PSKH2
Protein Characteristics:	AA 286-385
Origin:	Human
Source:	Wheat germ
Protein Type:	Recombinant
Purification tag / Conjugate:	This PSKH2 protein is labelled with GST tag.
Application:	ELISA, Western Blotting (WB), Affinity Purification (AP), Antibody Array (AA)

Product Details

Purpose:	PSKH2 (Human) Recombinant Protein (Q01)
Sequence:	WPSISHLAKD FIDKLLILEA GHRMSAGQAL DHPWVITMAA GSSMKNLQRA ISRNLMQRAS PHSQSPGSAQ SSKSHYSHKS RHMWSKRNL RIVESPLSALL
Characteristics:	Human PSKH2 partial ORF (NP_149117, 286 a.a. - 385 a.a.) recombinant protein with GST-tag at N-terminal.
Purification:	in vitro wheat germ expression system

Target Details

Target:	PSKH2
Alternative Name:	PSKH2 (PSKH2 Products)

Target Details

Background: Full Gene Name: protein serine kinase H2
Synonyms:

Gene ID: 85481

NCBI Accession: [NM_033126](#)

Application Details

Application Notes: Optimal working dilution should be determined by the investigator.

Comment: Preparation method: in vitro, wheat germ expression system
Product Quality tested by: 12.5% SDS-PAGE Stained with Coomassie Blue.

Restrictions: For Research Use only

Handling

Buffer: 50 mM Tris-HCl, 10 mM reduced Glutathione, pH =8.0 in the elution buffer.

Handling Advice: Aliquot to avoid repeated freezing and thawing.

Storage: -80 °C

Storage Comment: Best use within three months from the date of receipt of this protein.

Images

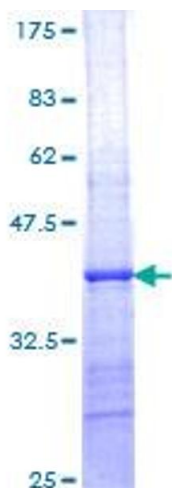


Image 1.