



[Go to Product page](#)

Datasheet for ABIN1316566

## PSMA8 Protein (AA 143-242) (GST tag)

### 1 Image

#### Overview

Quantity:	10 µg
Target:	PSMA8
Protein Characteristics:	AA 143-242
Origin:	Human
Source:	Wheat germ
Protein Type:	Recombinant
Purification tag / Conjugate:	This PSMA8 protein is labelled with GST tag.
Application:	ELISA, Western Blotting (WB), Affinity Purification (AP), Antibody Array (AA)

#### Product Details

Purpose:	PSMA8 (Human) Recombinant Protein (Q01)
Sequence:	GFDDDDGISRL YQTDPSGTYH AWKANAIGRS AKTVREFLEK NYTEDAIASD SEAIKLAIKA LLEVQSGGR NIELAIIRRN QPLKMFSAKE VELYVTEIEK
Characteristics:	Human PSMA8 partial ORF ( NP_653263, 143 a.a. - 242 a.a.) recombinant protein with GST-tag at N-terminal.
Purification:	in vitro wheat germ expression system

#### Target Details

Target:	PSMA8
Alternative Name:	PSMA8 ( <a href="#">PSMA8 Products</a> )

## Target Details

Background:	Full Gene Name: proteasome (prosome, macropain) subunit, alpha type, 8 Synonyms: MGC26605,PSMA7L
Gene ID:	143471
NCBI Accession:	<a href="#">NM_144662</a>
Pathways:	<a href="#">DNA Replication</a> , <a href="#">Synthesis of DNA</a>

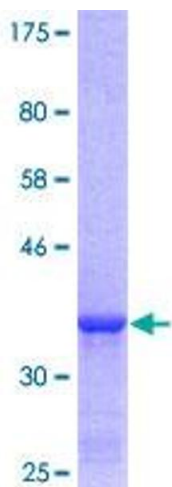
## Application Details

Application Notes:	Optimal working dilution should be determined by the investigator.
Comment:	Preparation method: in vitro, wheat germ expression system Product Quality tested by: 12.5% SDS-PAGE Stained with Coomassie Blue.
Restrictions:	For Research Use only

## Handling

Buffer:	50 mM Tris-HCl, 10 mM reduced Glutathione, pH =8.0 in the elution buffer.
Handling Advice:	Aliquot to avoid repeated freezing and thawing.
Storage:	-80 °C
Storage Comment:	Best use within three months from the date of receipt of this protein.

## Images



**Image 1.**