



[Go to Product page](#)

Datasheet for ABIN1316597

PSMB9 Protein (AA 1-219) (GST tag)

1 Image

Overview

Quantity:	10 µg
Target:	PSMB9
Protein Characteristics:	AA 1-219
Origin:	Human
Source:	Wheat germ
Protein Type:	Recombinant
Purification tag / Conjugate:	This PSMB9 protein is labelled with GST tag.
Application:	Western Blotting (WB), ELISA, Affinity Purification (AP), Antibody Array (AA)

Product Details

Purpose:	PSMB9 (Human) Recombinant Protein (P01)
Sequence:	MLRAGAPTGD LPRAGEVHTG TTIMAVEFDG GVVMGSDSRV SAGEAVVNRV FDKLSPLHER IYCALSGSAA DAQAVADMAA YQLELHGIEL EEPPLVLA AA NVVRNISYKY REDLSAHLMV AGWDQREGGQ VYGTLGGMLT RQPFAIGGSG STFIYGYVDA AYKPGMSPEE CRRFTTDAIA LAMSRDGSSG GVIYLVITITA AGVDHRVILG NELPKFYDE
Characteristics:	Human PSMB9 full-length ORF (AAH65513, 1 a.a. - 219 a.a.) recombinant protein with GST-tag at N-terminal.
Purification:	in vitro wheat germ expression system

Target Details

Target:	PSMB9
---------	-------

Target Details

Alternative Name:	PSMB9 (PSMB9 Products)
Background:	Full Gene Name: proteasome (prosome, macropain) subunit, beta type, 9 (large multifunctional peptidase 2) Synonyms: LMP2,MGC70470,PSMB6i,RING12,beta1i
Gene ID:	5698
Pathways:	Mitotic G1-G1/S Phases , DNA Replication , Synthesis of DNA

Application Details

Application Notes:	Optimal working dilution should be determined by the investigator.
Comment:	Preparation method: in vitro, wheat germ expression system Product Quality tested by: 12.5% SDS-PAGE Stained with Coomassie Blue.
Restrictions:	For Research Use only

Handling

Buffer:	50 mM Tris-HCl, 10 mM reduced Glutathione, pH =8.0 in the elution buffer.
Handling Advice:	Aliquot to avoid repeated freezing and thawing.
Storage:	-80 °C
Storage Comment:	Best use within three months from the date of receipt of this protein.

Images

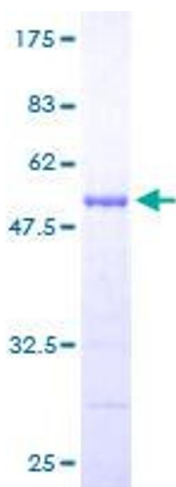


Image 1.