



[Go to Product page](#)

Datasheet for ABIN1316627

## PSMD12 Protein (AA 347-456) (GST tag)

### 1 Image

#### Overview

Quantity:	10 µg
Target:	PSMD12
Protein Characteristics:	AA 347-456
Origin:	Human
Source:	Wheat germ
Protein Type:	Recombinant
Purification tag / Conjugate:	This PSMD12 protein is labelled with GST tag.
Application:	ELISA, Western Blotting (WB), Affinity Purification (AP), Antibody Array (AA)

#### Product Details

Purpose:	PSMD12 (Human) Recombinant Protein (Q01)
Sequence:	GEKRWKDLKN RVVEHNIRIM AKYYTRITMK RMAQLLDLSV DESEAFLSNL VVNKTIFAKV DRLAGIINFQ RPKDPNLLN DWSQKLNSLM SLVNKTTHLI AKEEMIHNLQ
Characteristics:	Human PSMD12 partial ORF ( NP_002807, 347 a.a. - 456 a.a.) recombinant protein with GST-tag at N-terminal.
Purification:	in vitro wheat germ expression system

#### Target Details

Target:	PSMD12
Alternative Name:	PSMD12 ( <a href="#">PSMD12 Products</a> )

## Target Details

Background:	Full Gene Name: proteasome (prosome, macropain) 26S subunit, non-ATPase, 12 Synonyms: MGC75406,Rpn5,p55
Gene ID:	5718
NCBI Accession:	<a href="#">NM_002816</a>
Pathways:	<a href="#">Mitotic G1-G1/S Phases</a> , <a href="#">DNA Replication</a> , <a href="#">Synthesis of DNA</a> , <a href="#">Ubiquitin Proteasome Pathway</a>

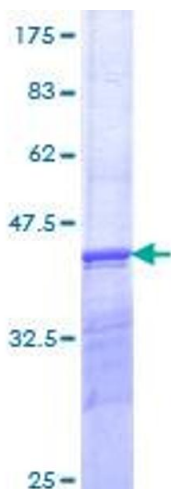
## Application Details

Application Notes:	Optimal working dilution should be determined by the investigator.
Comment:	Preparation method: in vitro, wheat germ expression system Product Quality tested by: 12.5% SDS-PAGE Stained with Coomassie Blue.
Restrictions:	For Research Use only

## Handling

Buffer:	50 mM Tris-HCl, 10 mM reduced Glutathione, pH =8.0 in the elution buffer.
Handling Advice:	Aliquot to avoid repeated freezing and thawing.
Storage:	-80 °C
Storage Comment:	Best use within three months from the date of receipt of this protein.

## Images



**Image 1.**