



[Go to Product page](#)

Datasheet for ABIN1316684

PSTPIP1 Protein (AA 148-247) (GST tag)

1 Image

Overview

Quantity:	10 µg
Target:	PSTPIP1
Protein Characteristics:	AA 148-247
Origin:	Human
Source:	Wheat germ
Protein Type:	Recombinant
Purification tag / Conjugate:	This PSTPIP1 protein is labelled with GST tag.
Application:	ELISA, Western Blotting (WB), Affinity Purification (AP), Antibody Array (AA)

Product Details

Purpose:	PSTPIP1 (Human) Recombinant Protein (Q01)
Sequence:	CRDADDAEQA FERISANGHQ KQVEKSQNKARQCKDSATEA ERVYRQSIAQ LEKVRAEWEQ EHRTTCEAFQ LQEFDRILTIL RNALWVHSNQ LSMQCVKDDE
Characteristics:	Human PSTPIP1 partial ORF (NP_003969, 148 a.a. - 247 a.a.) recombinant protein with GST-tag at N-terminal.
Purification:	in vitro wheat germ expression system

Target Details

Target:	PSTPIP1
Alternative Name:	PSTPIP1 (PSTPIP1 Products)

Target Details

Background:	Full Gene Name: proline-serine-threonine phosphatase interacting protein 1 Synonyms: CD2BP1,CD2BP1L,CD2BP1S,H-PIP,PAPAS,PSTPIP
Gene ID:	9051
NCBI Accession:	NM_003978

Application Details

Application Notes:	Optimal working dilution should be determined by the investigator.
Comment:	Preparation method: in vitro, wheat germ expression system Product Quality tested by: 12.5% SDS-PAGE Stained with Coomassie Blue.
Restrictions:	For Research Use only

Handling

Buffer:	50 mM Tris-HCl, 10 mM reduced Glutathione, pH =8.0 in the elution buffer.
Handling Advice:	Aliquot to avoid repeated freezing and thawing.
Storage:	-80 °C
Storage Comment:	Best use within three months from the date of receipt of this protein.

Images

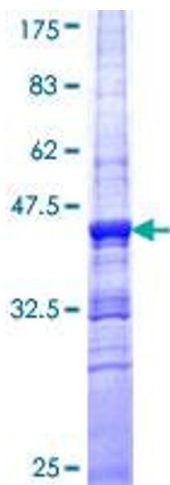


Image 1.