



[Go to Product page](#)

Datasheet for ABIN1316700

## Patched 1 Protein (PTCH1) (AA 1-183) (GST tag)

### 1 Image

#### Overview

Quantity:	10 µg
Target:	Patched 1 (PTCH1)
Protein Characteristics:	AA 1-183
Origin:	Human
Source:	Wheat germ
Protein Type:	Recombinant
Purification tag / Conjugate:	This Patched 1 protein is labelled with GST tag.
Application:	Western Blotting (WB), ELISA, Affinity Purification (AP), Antibody Array (AA)

#### Product Details

Purpose:	PTCH (Human) Recombinant Protein (P01)
Sequence:	MGKATGRKAP LWLRAKFQRL LFKLGCIYQK NCGKFLVGL LIFGAFVGL KAALETNVE ELWVEVGGRV SRELNRYTRQK IGEEAMFNPQ LMIQTPKEEG ANVLTTEALL QHLDSALQAS RVHVYMYNRQ WKLEHLCYKS GELITETGYM DQIEYLYPC LIITPLDCFW EGAKLQSGTA YLL
Characteristics:	Human PTCH full-length ORF ( AAH43542.1, 1 a.a. - 183 a.a.) recombinant protein with GST-tag at N-terminal.
Purification:	in vitro wheat germ expression system

#### Target Details

Target:	Patched 1 (PTCH1)
Alternative Name:	PTCH1 ( <a href="#">PTCH1 Products</a> )

## Target Details

Background:	Full Gene Name: patched homolog 1 (Drosophila) Synonyms: BCNS,FLJ26746,FLJ42602,HPE7,NBCCS,PTC,PTC1,PTCH,PTCH11
Gene ID:	5727
Pathways:	<a href="#">Hedgehog Signaling</a> , <a href="#">Carbohydrate Homeostasis</a> , <a href="#">Tube Formation</a>

## Application Details

Application Notes:	Optimal working dilution should be determined by the investigator.
Comment:	Preparation method: in vitro, wheat germ expression system Product Quality tested by: 12.5% SDS-PAGE Stained with Coomassie Blue.
Restrictions:	For Research Use only

## Handling

Buffer:	50 mM Tris-HCl, 10 mM reduced Glutathione, pH =8.0 in the elution buffer.
Handling Advice:	Aliquot to avoid repeated freezing and thawing.
Storage:	-80 °C
Storage Comment:	Best use within three months from the date of receipt of this protein.

## Images

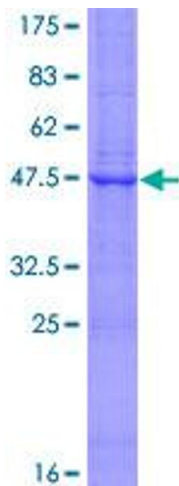


Image 1.