



[Go to Product page](#)

Datasheet for ABIN1316704

Patched 2 Protein (PTCH2) (AA 79-188) (GST tag)

1 Image

Overview

Quantity:	10 µg
Target:	Patched 2 (PTCH2)
Protein Characteristics:	AA 79-188
Origin:	Human
Source:	Wheat germ
Protein Type:	Recombinant
Purification tag / Conjugate:	This Patched 2 protein is labelled with GST tag.
Application:	ELISA, Western Blotting (WB), Affinity Purification (AP), Antibody Array (AA)

Product Details

Purpose:	PTCH2 (Human) Recombinant Protein (Q01)
Sequence:	ETNLEQLWVE VGSRVSQELH YTKEKLGEEA AYTSQMLIQT ARQEGENILT PEALGLHLQA ALTASKVQVS LYGKSWDLNK ICYKSGVPLI ENGMIERMIE KLFPCVILTP
Characteristics:	Human PTCH2 partial ORF (NP_003729, 79 a.a. - 188 a.a.) recombinant protein with GST-tag at N-terminal.
Purification:	in vitro wheat germ expression system

Target Details

Target:	Patched 2 (PTCH2)
Alternative Name:	PTCH2 (PTCH2 Products)

Target Details

Background: Full Gene Name: patched homolog 2 (Drosophila)

Synonyms:

Gene ID: 8643

NCBI Accession: [NM_003738](#)

Pathways: [Hedgehog Signaling](#)

Application Details

Application Notes: Optimal working dilution should be determined by the investigator.

Comment: Preparation method: in vitro, wheat germ expression system
Product Quality tested by: 12.5% SDS-PAGE Stained with Coomassie Blue.

Restrictions: For Research Use only

Handling

Buffer: 50 mM Tris-HCl, 10 mM reduced Glutathione, pH =8.0 in the elution buffer.

Handling Advice: Aliquot to avoid repeated freezing and thawing.

Storage: -80 °C

Storage Comment: Best use within three months from the date of receipt of this protein.

Images

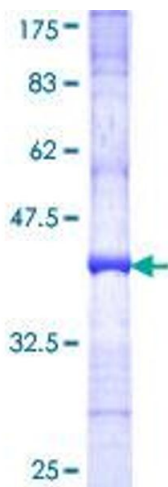


Image 1.