



[Go to Product page](#)

Datasheet for ABIN1316715

PTENP1 Protein (AA 1-369) (GST tag)

1 Image

Overview

Quantity:	10 µg
Target:	PTENP1
Protein Characteristics:	AA 1-369
Origin:	Human
Source:	Wheat germ
Protein Type:	Recombinant
Purification tag / Conjugate:	This PTENP1 protein is labelled with GST tag.
Application:	Affinity Purification (AP), Antibody Array (AA), ELISA, Western Blotting (WB)

Product Details

Purpose:	PTENP1 (Human) Recombinant Protein (P01)
Sequence:	MGFPAERLEG VYRNNIDDVV RFLDSKHKNH YKIHNLCAER HYDTAKSNYR VAQYPFEDHN PPQLELIKPF CEDLDQWLSE DDNHVAAIHC KAGKGRGTGIM IYAYLLHRGK FLKAQEALDF YGEVRTRDKK GVTIPSQRRY VYYYSYLVKN HVDYRPVALL FHKMMFETIP MFSGGTCNPQ FVVCQLKVKM YSSNSGPTRW EDKFMYFEFP QPLPVCGGIK VEFFHKQNKM LKKDKMFHFW VNTFFIPGPE ETSEKVENGSLCDQEIDSIC SIERADNDKE YLVLTLTKNL LDKANKDKAN RYFSPNFKVK LYFTKTVEEP SNPEASSSTS VTPDVSDNEP DHYRYSDDTD SDPENEPFDE DQHTQITKV
Characteristics:	Human PTENP1 full-length ORF (AAH38293.1, 1 a.a. - 369 a.a.) recombinant protein with GST-tag at N-terminal.
Purification:	in vitro wheat germ expression system

Target Details

Target:	PTENP1
Alternative Name:	PTENP1 (PTENP1 Products)
Background:	Full Gene Name: phosphatase and tensin homolog pseudogene 1 Synonyms: PTEN-rs,PTEN2,PTH2,psiPTEN
Gene ID:	11191

Application Details

Application Notes:	Optimal working dilution should be determined by the investigator.
Comment:	Preparation method: in vitro, wheat germ expression system Product Quality tested by: 12.5% SDS-PAGE Stained with Coomassie Blue.
Restrictions:	For Research Use only

Handling

Buffer:	50 mM Tris-HCl, 10 mM reduced Glutathione, pH =8.0 in the elution buffer.
Handling Advice:	Aliquot to avoid repeated freezing and thawing.
Storage:	-80 °C
Storage Comment:	Best use within three months from the date of receipt of this protein.

Images

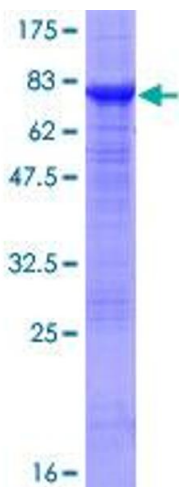


Image 1.