

Datasheet for ABIN1316726

PTGER2 Protein (AA 1-358) (GST tag)[Go to Product page](#)**1** Image

Overview

Quantity:	10 µg
Target:	PTGER2
Protein Characteristics:	AA 1-358
Origin:	Human
Source:	Wheat germ
Protein Type:	Recombinant
Purification tag / Conjugate:	This PTGER2 protein is labelled with GST tag.
Application:	Western Blotting (WB), ELISA, Affinity Purification (AP), Antibody Array (AA)

Product Details

Purpose:	PTGER2 (Human) Recombinant Protein (P01)
Sequence:	MGNASNDSQS EDCETRQWLP PGESPAISSV MFSAGVLGNL IALALLARRW RGDVGCSAGR RSSLSLFHVL VTELVFTDLL GTCLISPVVL ASYARNQTLV ALAPESRACT YFAFAMTFFS LATMLMLFAM ALERYLSIGH PYFYQRRVSR SGGLAVLPVI YAVSLLFCSL PLLDYGQYVQ YCPGTWCFIR HGR TAYLQLY ATLLLLLIVS VLACNFSVIL NLIRMHRRSR RSRCGPSLGS GRGGPGARRR GERVSMAEET DHLILLAIMT ITFAVCSLPF TIFAYMNETS SRKEKWDLQA LRFLSINSII DPWVFAILRP PVLRLMRSVL CCRISLRTQD ATQTSCSTQS DASKQADL
Characteristics:	Human PTGER2 full-length ORF (NP_000947.2, 1 a.a. - 358 a.a.) recombinant protein with GST-tag at N-terminal.
Purification:	in vitro wheat germ expression system

Target Details

Target:	PTGER2
Alternative Name:	PTGER2 (PTGER2 Products)
Background:	Full Gene Name: prostaglandin E receptor 2 (subtype EP2), 53 kDa Synonyms: EP2
Gene ID:	5732
NCBI Accession:	NM_000956

Application Details

Application Notes:	Optimal working dilution should be determined by the investigator.
Comment:	Preparation method: in vitro, wheat germ expression system Product Quality tested by: 12.5% SDS-PAGE Stained with Coomassie Blue.
Restrictions:	For Research Use only

Handling

Buffer:	50 mM Tris-HCl, 10 mM reduced Glutathione, pH =8.0 in the elution buffer.
Handling Advice:	Aliquot to avoid repeated freezing and thawing.
Storage:	-80 °C
Storage Comment:	Best use within three months from the date of receipt of this protein.

Images

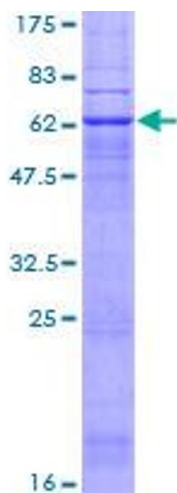


Image 1.