

Datasheet for ABIN1316736

## Prostaglandin E Synthase Protein (PTGES) (AA 1-152) (GST tag)



[Go to Product page](#)

### 1 Image

#### Overview

Quantity:	10 µg
Target:	Prostaglandin E Synthase (PTGES)
Protein Characteristics:	AA 1-152
Origin:	Human
Source:	Wheat germ
Protein Type:	Recombinant
Purification tag / Conjugate:	This Prostaglandin E Synthase protein is labelled with GST tag.
Application:	Western Blotting (WB), ELISA, Affinity Purification (AP), Antibody Array (AA)

#### Product Details

Purpose:	PTGES (Human) Recombinant Protein (P01)
Sequence:	MPAHSVMSS PALPAFLCS TLLVIKMYVV AIITGQVRLR KKAFANPEDA LRHGGPQYCR SDPDVERCLR AHRNDMETIY PFLFLGFVYS FLGPNPFVAW MHFLVFLVGR VAHTVAYLGK LRAPIRSVTY TLAQLPCASM ALQILWEAAR HL
Characteristics:	Human PTGES full-length ORF ( AAH08280.1, 1 a.a. - 152 a.a.) recombinant protein with GST-tag at N-terminal.
Purification:	in vitro wheat germ expression system

#### Target Details

Target:	Prostaglandin E Synthase (PTGES)
Alternative Name:	PTGES ( <a href="#">PTGES Products</a> )

## Target Details

Background:	Full Gene Name: prostaglandin E synthase Synonyms: MGC10317, MGST-IV, MGST1-L1, MGST1L1, MPGES, PGES, PIG12, PP102, PP1294, TP53I12, mPGES-1
Gene ID:	9536

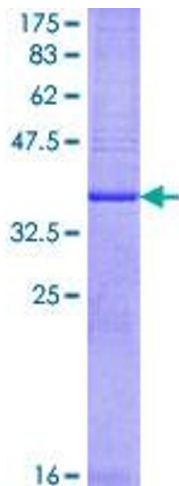
## Application Details

Application Notes:	Optimal working dilution should be determined by the investigator.
Comment:	Preparation method: in vitro, wheat germ expression system Product Quality tested by: 12.5% SDS-PAGE Stained with Coomassie Blue.
Restrictions:	For Research Use only

## Handling

Buffer:	50 mM Tris-HCl, 10 mM reduced Glutathione, pH =8.0 in the elution buffer.
Handling Advice:	Aliquot to avoid repeated freezing and thawing.
Storage:	-80 °C
Storage Comment:	Best use within three months from the date of receipt of this protein.

## Images



**Image 1.**